



**CMD 25-H12.45A**

Date: 2026-01-16

## **Supplementary Information**

### **Presentation from the Ya'thi Néné Lands and Resources Office**

In the matter of

#### **NexGen Energy Ltd.**

---

License application to prepare a site for  
and construct its Rook I uranium mine and  
mill project

#### **Commission Public Hearing Part 2**

February 2026

## **Renseignements supplémentaires**

### **Présentation du Bureau des terres et des ressources de Ya'thi Néné**

À l'égard de

#### **NexGen Energy Ltd.**

---

Demande de permis concernant la  
préparation de l'emplacement et la  
construction de son projet de mine et  
d'usine de concentration d'uranium Rook I

#### **Audience publique de la Commission Partie 2**

Février 2026

# Response to:

**NexGen Rook I Project: Request to prepare  
a site for and construct a uranium mine and  
mill**

Presented by:

Ya'thi Néné Lands and Resources

February 10, 2026





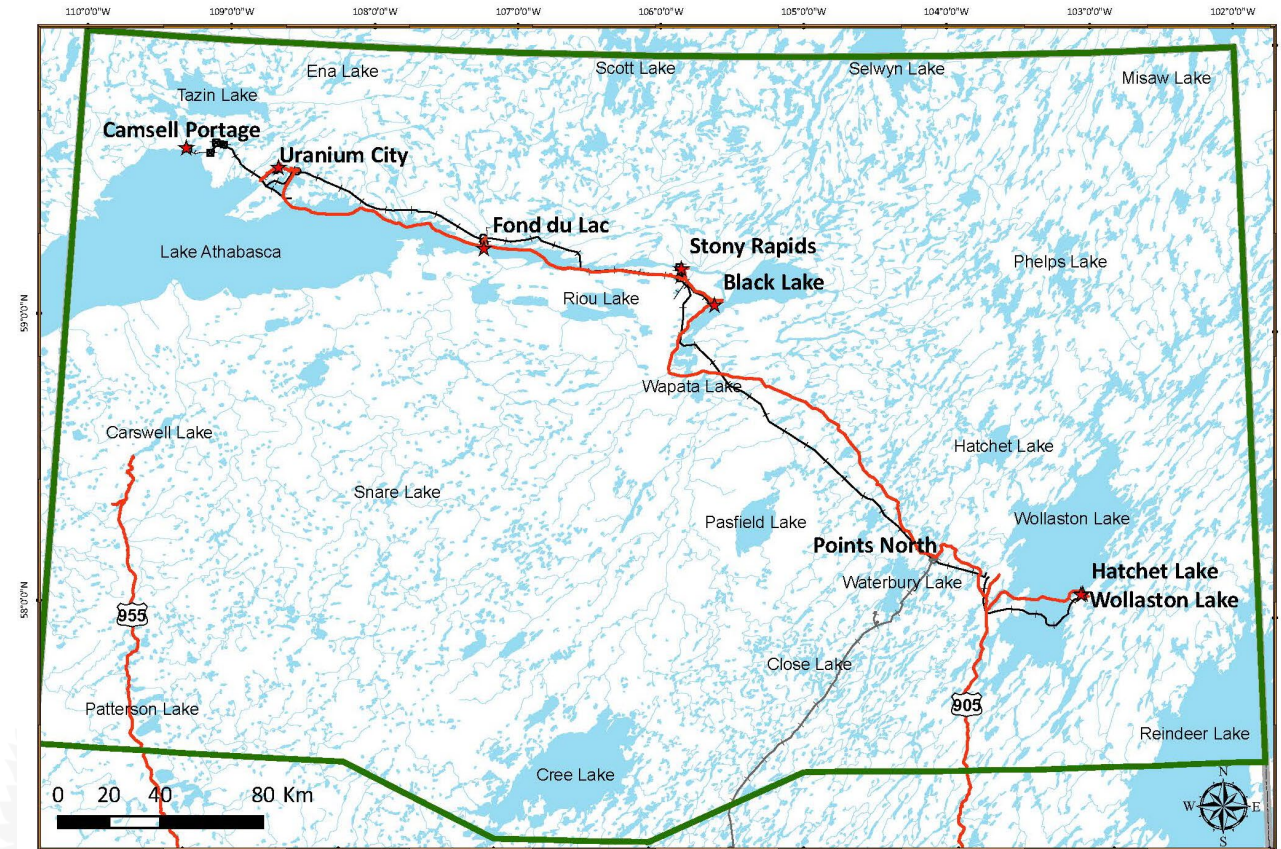
# Ya'thi Néné Lands and Resources (YNLR)

## **Mission:**

*To protect the lands and waters of the Athabasca Basin for the long-term benefit of its Denesúłine First Nations and Athabasca communities*



# Nuhenéné (Traditional Territory)





# Athabasca Denesų́łíné & Basin Communities

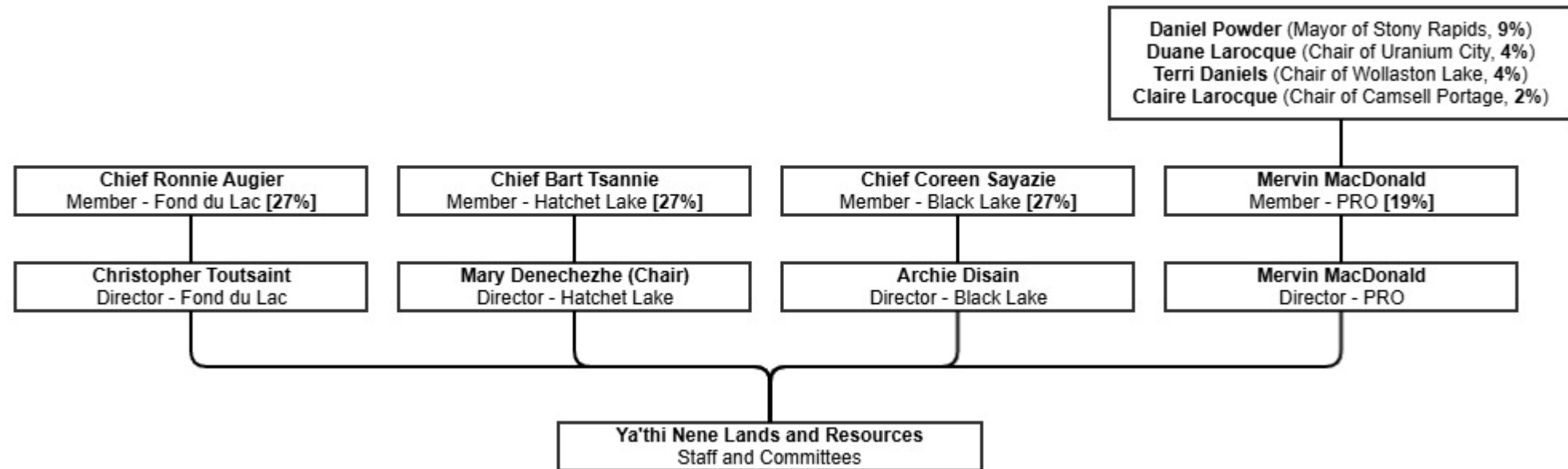
YNLR is owned by the **7 Athabasca communities**:

- Black Lake First Nation
- Fond du Lac First Nation
- Hatchet Lake First Nation
- Stony Rapids
- Wollaston Lake Post
- Uranium City
- Camsell Portage

Communities are united to protect Nuhenéné and ensure responsible development

# Governance

Our Leaders mandate YNLR to safeguard Nuhenéné and advocate for Basin residents





# YNLR Staff and Offices: Uranium City, Fond du Lac, Black Lake, Hatchet Lake, Saskatoon



Garrett Schmidt – Executive Director  
Dana Kellett – Manager of Environment  
Katherine Hay – Manager of Corporate Affairs  
Bruce Hanbidge – Strategic Advisor  
Megan Wallace – Environmental Land Use Planner  
Steven Foti – Project Manager  
Celeste Robillard – Administrative Coordinator  
Ashley Robillard – Admin/Comms Assistant  
Keesha Martin – ENSA Coordinator  
Tina Giroux – Contract ENSA Project Manager  
Linda McNabb – Contract Human Resources  
May-Britt Jensen – Contract Workforce Development  
Fond du Lac – Jason Adam, Morgan Lidguerre  
Black Lake/Stony Rapids - Vacant  
Hatchet Lake/Wollaston –Jean Tsannie, Thomas Besskkaystare, Curtis Tsannie  
Uranium City - Margaret Powder, Wayne Powder



# Ya'thi Néné's Role

- Prior to YNLR, Athabasca communities were largely uninformed about exploration and mining projects and received little benefits
- Damage to the lands and waters occurred
- Now, YNLR liaises between communities, industry, and government on projects of mutual interest and has formal agreements with multiple exploration and mining companies
- To strengthen the relationship and support the discussion of issues or concerns, YNLR and CNSC established a Terms of Reference in 2022





# Relationship with Industry

- YNLR has relationships with numerous resource companies operating in the Athabasca Basin
- Partnerships are based on respect, transparency, and shared commitment to stewardship and collaboration



# How We Protect Nuhenéné

- Consultation and engagement
- Environmental reviews
- Environmental monitoring
- Policy and technical analysis





# Current and Forthcoming Work

- Site inspections by Community Land Technicians (CLTs)
- Environmental monitoring and Traditional Knowledge gathering
- Woodland caribou/cumulative effects monitoring
- Etthén Néné Stewardship Areas (long-term land protection initiative)





# Etthén Nene Stewardship Areas (ENSA)

## *Community-driven land stewardship*

Finding balance:

- Optimizing sustainable development
  - Economic opportunities
  - Strengthening partnerships
- Beneficial protection
  - Cultural resilience
  - Wildlife and environment

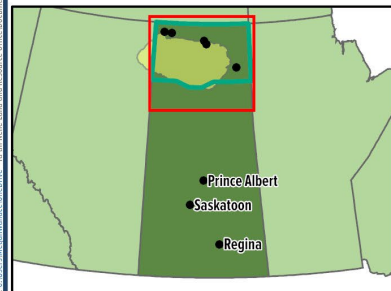




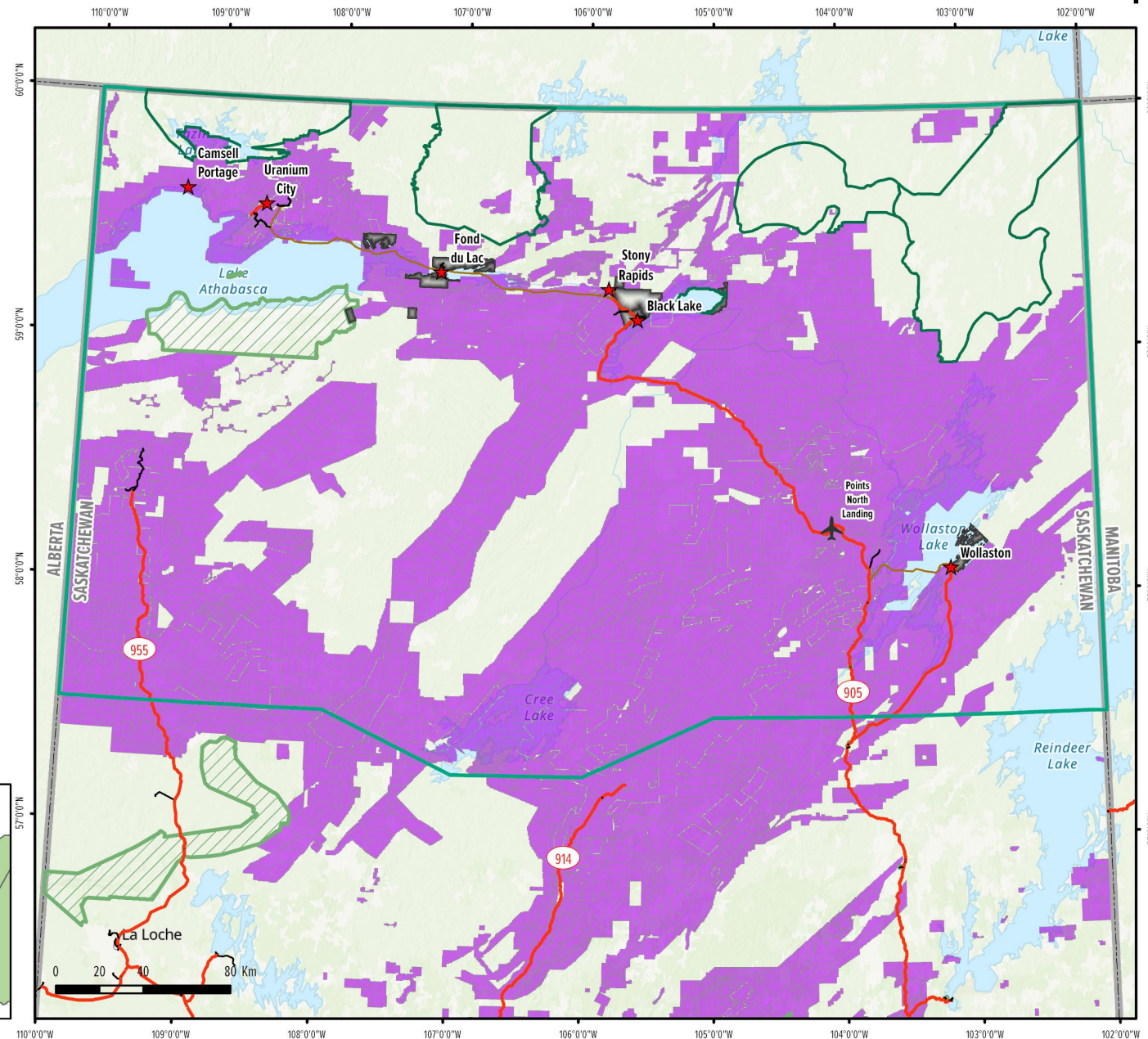
- Etthén Néné Stewardship Area
- Nuhenéné
- Athabasca Communities
- Points North
- Highways
- Winter Roads
- Other Roads
- All Parks as Legislated
- Athabasca Reserves
- Mineral Dispositions
- Provincial Boundary

Map Scale:  
1:2,500,000

BASEMAP INFORMATION SOURCES:  
Canvec  
Government of Saskatchewan  
Natural Resources Canada (NRCCAN).



## Industry and ENSA



This information was created solely for a specific purpose within the Athabasca Denesuline First Nations. Any use must be approved by Yá'Thi Néné Lands and Resources Office. NAD 1983 UTM Zone 13N. October, 2025





# YNLR's Involvement in IEMP



YNLR appreciates our involvement with the CNSC Independent Environmental Monitoring Program (IEMP) each year

- Conduct interviews to help determine sampling locations and traditional foods to include in sampling
- Staff participate in field work
- Residents can donate food they want tested
- Great example of how remote Indigenous communities can work directly with regulators





# Overview of our Intervention

- Indigenous Engagement
- Cumulative Effects
- Water Quality & Fish Health
- Wildlife (Caribou)
- Environmental Monitoring & Indigenous Involvement

# Understanding the Rook I Project

- Underground uranium mine and mill
- Within Treaty 8 Territory
- Average of 1300 tonnes of ore per day
- 24-year operation (not including construction and closure stages)





# YNLR's Engagement with NexGen



- Multi-year review of the EIS
- Engagement Agreement in 2023
- Joint working group (JWG) meetings between YNLR and NexGen
- Review and comment on draft plans
- Collaborative progress



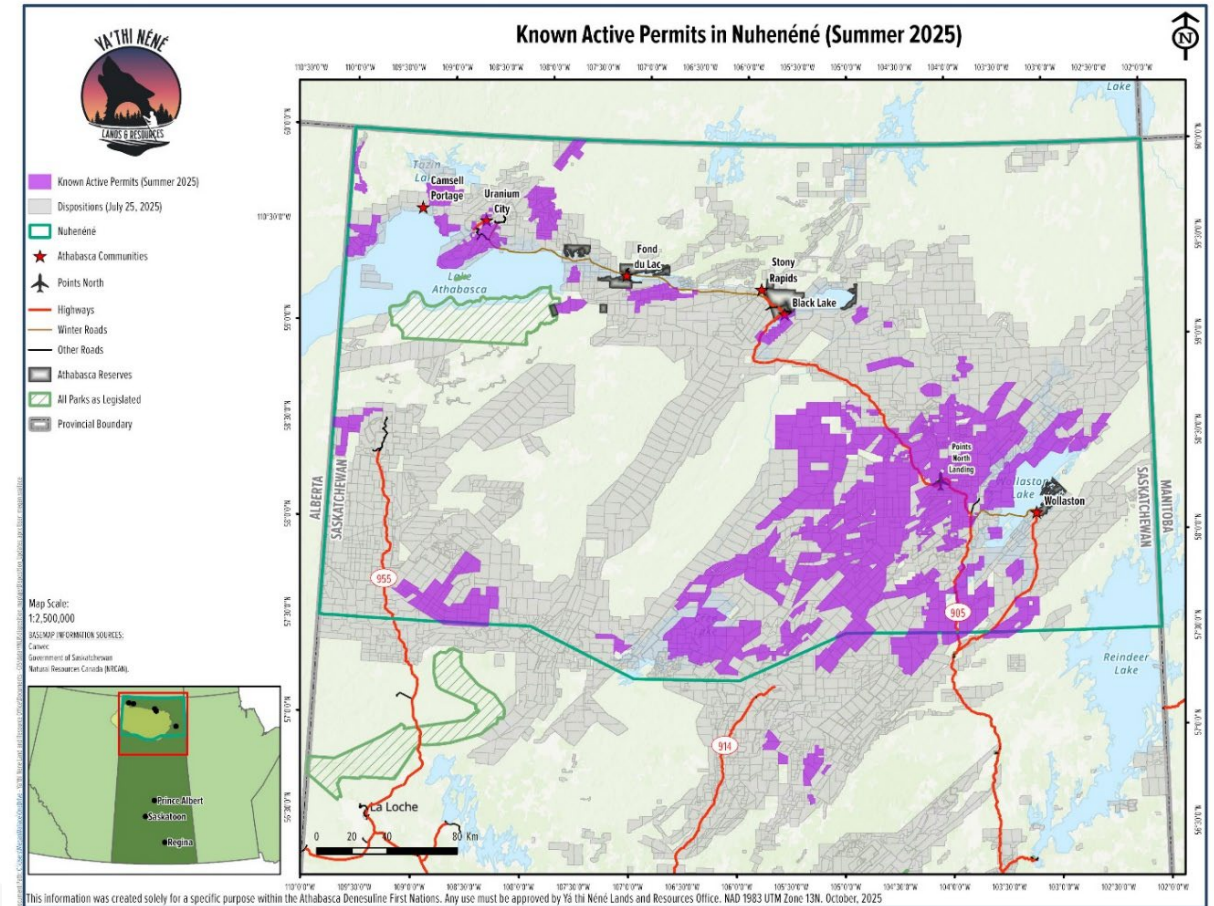
# Respectful and Meaningful Engagement

- Engagement must be ongoing, timely, and transparent
- Indigenous knowledge must be central



# Cumulative Effects: Our Biggest Concern

- Nuhenéné is facing a minimum of 20,400 km of linear disturbance
- Rapid growth of mineral claims
- Cumulative effects reduce the ability to practice traditional land use and exercise and uphold Treaty Rights





# Woodland Caribou

- Provincial Ministerial Decision requires a caribou plan and offsets
- Need ongoing Indigenous review and input on these plans
- Habitat fragmentation is a critical concern





# Water Quality and Fish Health

- Other proponents nearby proposing more uranium mines
- Communities depend on clean water for drinking, fishing, tourism, travel
- Past mistakes and experience (including Beaverlodge) heighten concern



# Lessons from Beaverlodge

- Legacy contamination remains
- ICP transfer was opposed by all seven Basin communities
- Importance of early planning, financial assurance, and long-term monitoring

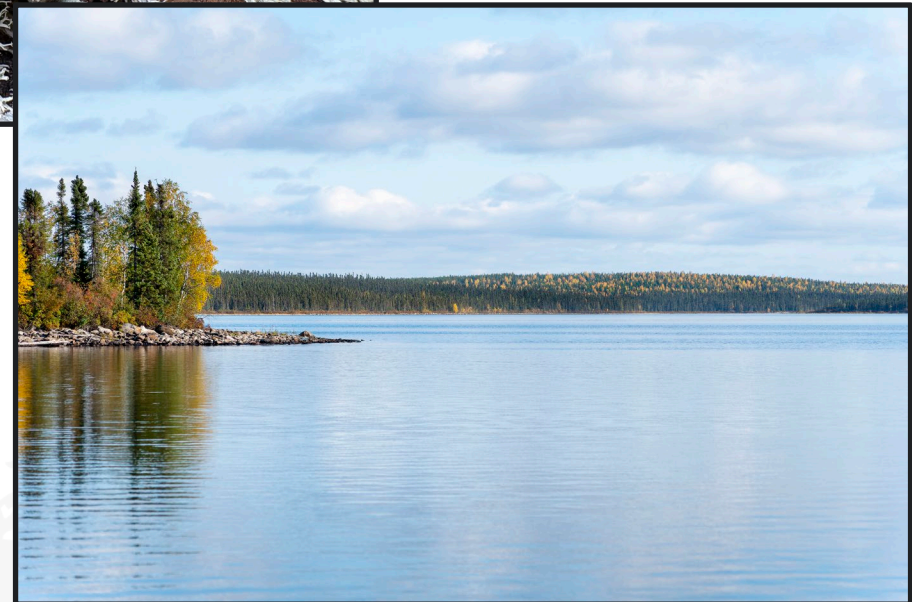




# Environmental Monitoring Needs



- Monitoring must include:
- Water quality
- Wildlife movement
- Fish health
- Indigenous access to summarized and/or raw field data in real time





# Indigenous Involvement in Monitoring



- Indigenous-led, co-designed monitoring program
- Data sharing agreements
- Employment & training opportunities
- Community confidence

# Closure and Reclamation Planning

- Must start now, not at end of mine life
- Strong financial assurance
- Clear long-term responsibilities





# Key Recommendations

- Early review of all monitoring plans
- Indigenous-led environmental monitoring
- Cumulative effects considered holistically
- Strong closure and reclamation planning
- Transparent data sharing
- Ongoing, meaningful engagement



# The Importance of Protecting Nuhenéné

- Our homeland must be protected for future generations
- We support development that aligns with respect, transparency, safety, inclusion and sustainability



# Path Forward with NexGen and CNSC



- Commitment to continued engagement and strengthening of Basin community inclusion
- Community-driven monitoring
- Building a shared vision for responsible development



# Marsi cho!



YA'THI NÉNÉ LANDS AND RESOURCES  
100 – 335 PACKHAM AVENUE  
SASKATOON, SK S7N 4S1

T: 306-477-1251  
F: 306-802-4800  
E: ADMIN@YATHINENE.COM

[YATHINENE.CA](http://YATHINENE.CA)