



CMD 25-H9.1B

Date: 2025-11-25

Supplementary Information

Renseignements supplémentaires

Presentation from Denison Mines Corporation

Présentation de Denison Mines Corporation

In the matter of

À l'égard de

Denison Mines Corporation

Licence Application to Prepare Site and
Construct for Denison Mines' Wheeler
River Mine and Mill Project

Denison Mines Corporation

Demande de permis pour la préparation de
l'emplacement et la construction du projet
de mine et d'usine de concentration
d'uranium Wheeler River de Denison Mines

Commission Public Hearing Part 2

Audience publique de la Commission Partie 2

December 8-11, 2025

8-11 décembre 2025

Wheeler River Project

Canadian Nuclear Safety Commission
Construction Licence Hearing – Part 2

December 8 –11, 2025

Powering
**PEOPLE, PARTNERSHIPS
AND PASSION.**



Enison Mines

Uranium Development & Exploration

The Athabasca Basin, Northern Saskatchewan



The Company and Its People

Bringing 70 years of history into the future



A large-scale photograph of an industrial drilling or mining operation at night. A tall, illuminated drilling rig stands prominently in the center, with various support vehicles and equipment visible in the foreground and background. The scene is lit with artificial lights, creating a high-contrast, industrial atmosphere. The word 'Agenda' is overlaid in white text on the left side of the image.

Agenda

1

Indigenous and Community Engagement

2

Implementation of the Engagement Program

3

Actions Undertaken Following Part 1 Hearing

4

Conclusion

1 Indigenous and Community Engagement

Powering
**PEOPLE, PARTNERSHIPS
AND PASSION.**



Indigenous and Community Engagement Rooted in history and values

Acknowledgement

Denison Mines Corp. and its subsidiaries ("Denison") respectfully acknowledge that our business operates in Canada on lands that are in the traditional territory of Indigenous peoples. Our activities encompass the entire mining life cycle, from early-stage exploration to advanced project evaluation, construction, operation, closure and restoration – with the potential for activities to span many decades. As such, Denison is committed to collaborating with Indigenous peoples and communities to build long-term, respectful, trusting, and mutually beneficial relationships and aspires to avoid any adverse impacts of Denison's activities and operations.

Denison's Head Office is located in the traditional territory of many nations, including the Mississaugas of the Credit, the Anishnabeg, the Chippewa, the Haudenosaunee and the Wendat peoples, and is now home to many diverse First Nations, Inuit and Métis peoples. We also acknowledge that Toronto is covered by Treaty 13 with the Mississaugas of the Credit.

Denison's exploration and evaluation operations in Saskatchewan, including its office in Saskatoon and various project interests in northern Saskatchewan, are located in regions covered by Treaty 6, Treaty 8 and Treaty 10, which encompass the traditional lands of the Cree, Dakota, Dene, Lakota, Nakota, Saulteaux, and within the homeland of the Métis.

Denison's flagship Wheeler River Uranium Project is located in northern Saskatchewan within the boundaries of Treaty 10, in the traditional territory of English River First Nation, and in the homeland of the Métis.

Denison's Closed Mines operations in the Elliot Lake region of northern Ontario are located within the boundaries of the Robinson Huron Treaty of 1850, signatories to which include the Serpent River First Nation.

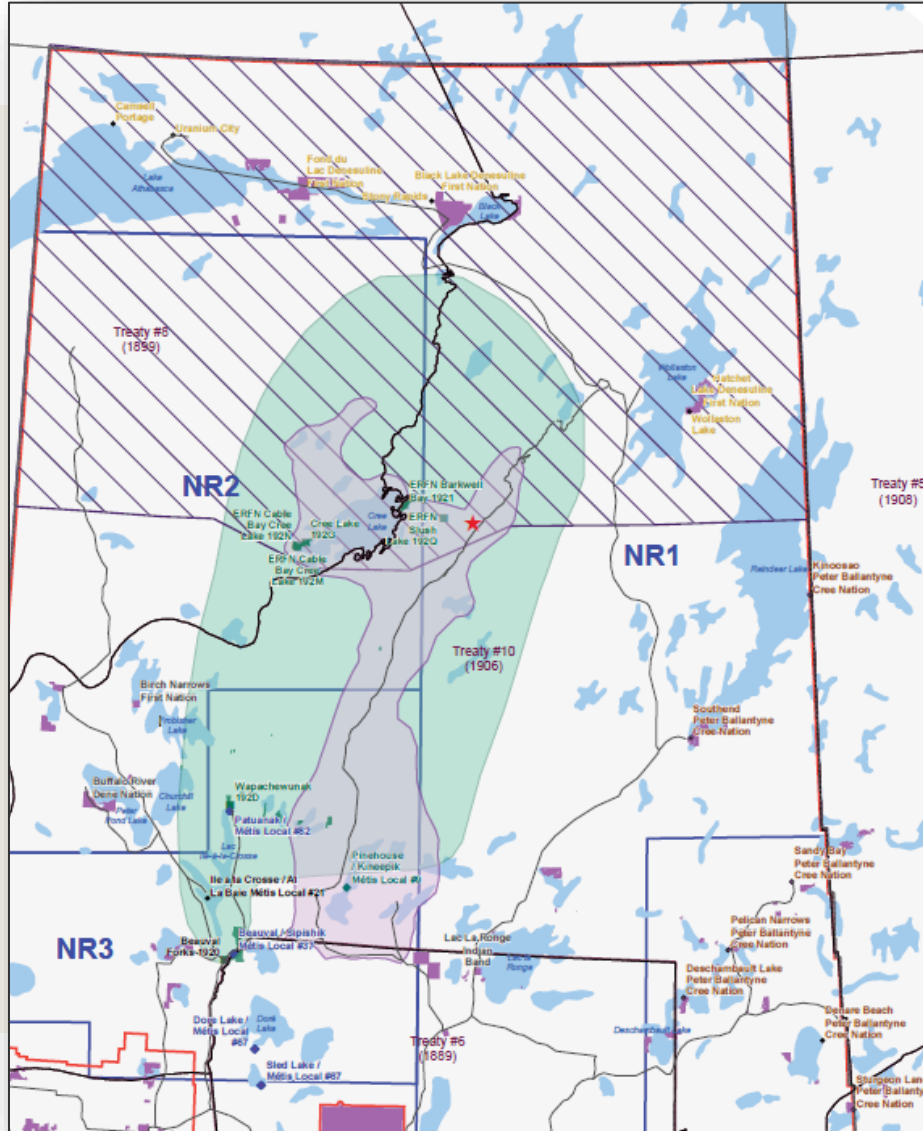
Business and Reconciliation

Denison recognizes the critical necessity of advancing reconciliation with Indigenous peoples in Canada and the important role of Canadian business in the reconciliation process. In expressing its intentions in this Policy, Denison has carefully considered the standards and principles articulated by The United Nations Declaration on the Rights of Indigenous Peoples ("UNDRIP") and Call to Action 92 from Canada's Truth and Reconciliation Commission ("Call to Action 92").



Indigenous and Community Engagement

A program spanning almost 10 years



Basis

developed from Denison's **decades-long** presence as the operator of the Wheeler River Property.

Guided

by the direction of CNSC and Federal & Provincial Government, plus **experience** with other operations in the area.

Complemented

with **progressive** actions beyond regulatory requirements, associated with **UNDRIP** and **FPIC**.

Adapted

as **new information** is obtained.

Ongoing into the future

Indigenous and Community Engagement

Status of engagement over time

Early Engagement (2016 – present)

English River First Nation
Kineepik Métis Local #9
Sipishik Métis Local #37
A La Baie Métis Local #21
Northern Village of Pinehouse Lake
Northern Village of Beauval
Northern Village of Île-à-la-Crosse
Hamlet of Patuanak
ERFN Trapper

Project Description (2019 – present)

Ya'thi Néné Lands and Resources Office
Métis Nation - Saskatchewan
Meadow Lake Tribal Council
Prince Albert Grand Council
Patuanak Métis Local #82
Birch Narrows Dene Nation
Buffalo River Dene Nation

Draft EIS (2023 – present)

Peter Ballantyne Cree Nation
Lac La Ronge Indian Band

2

Implementation of the Engagement Program

Powering
**PEOPLE, PARTNERSHIPS
AND PASSION.**



Implementation of the Engagement Program

General engagement



ISR Mining

Community

Environment

Contact

Career Opportunities

Resources

The Wheeler River Project.

The Wheeler River Project is situated in the eastern portion of the Athabasca Basin region in northern Saskatchewan, and it is the site of a proposed in Situ Recovery (ISR) uranium mining project. It is located 35 km north-northeast of the Key Lake mill and 35 km southwest of the McArthur River uranium mine, within the traditional territory of several Indigenous peoples. Denison Mines has an effective 95% ownership of the project, and as the project operator we are working closely with Indigenous groups and local communities to establish a positive legacy through the development of the project.

[Learn More](#)

Wheelerriverproject.ca



KML Community meeting



YNLR Site Tour



2023: ERFN Site Tour

ISR Mining Fundamentals

How do you mine without moving a rock?

1. A mining solution is injected into the deposit.

2. The solution dissolves uranium as it travels through the deposit.

3. Wells pull the solution back to the surface.

4. The solution travels to the processing plant.

5. Uranium is separated from the solution.

2024: Information Boards



2022: La Plonge Meeting

Areas of Interest Throughout the Engagement Process

ISR mining method and environmental considerations



Mining Methods

in northern Saskatchewan discussed, including **conventional techniques** and **new methods** to the area.



In-Situ Recovery

explained using **multiple accessible approaches**.

Environmental Considerations

of ISR mining method **emphasized** throughout engagement activities.

Areas of Interest Throughout the Engagement Process

Groundwater and surface water protection



Comprehensive Water Baseline Program Undertaken



Planning for Ongoing Monitoring



Planning for Reclamation Activities

Water Protection

has been prioritized throughout the environmental assessment for all Project phases, from construction to post decommissioning.

Robust Monitoring

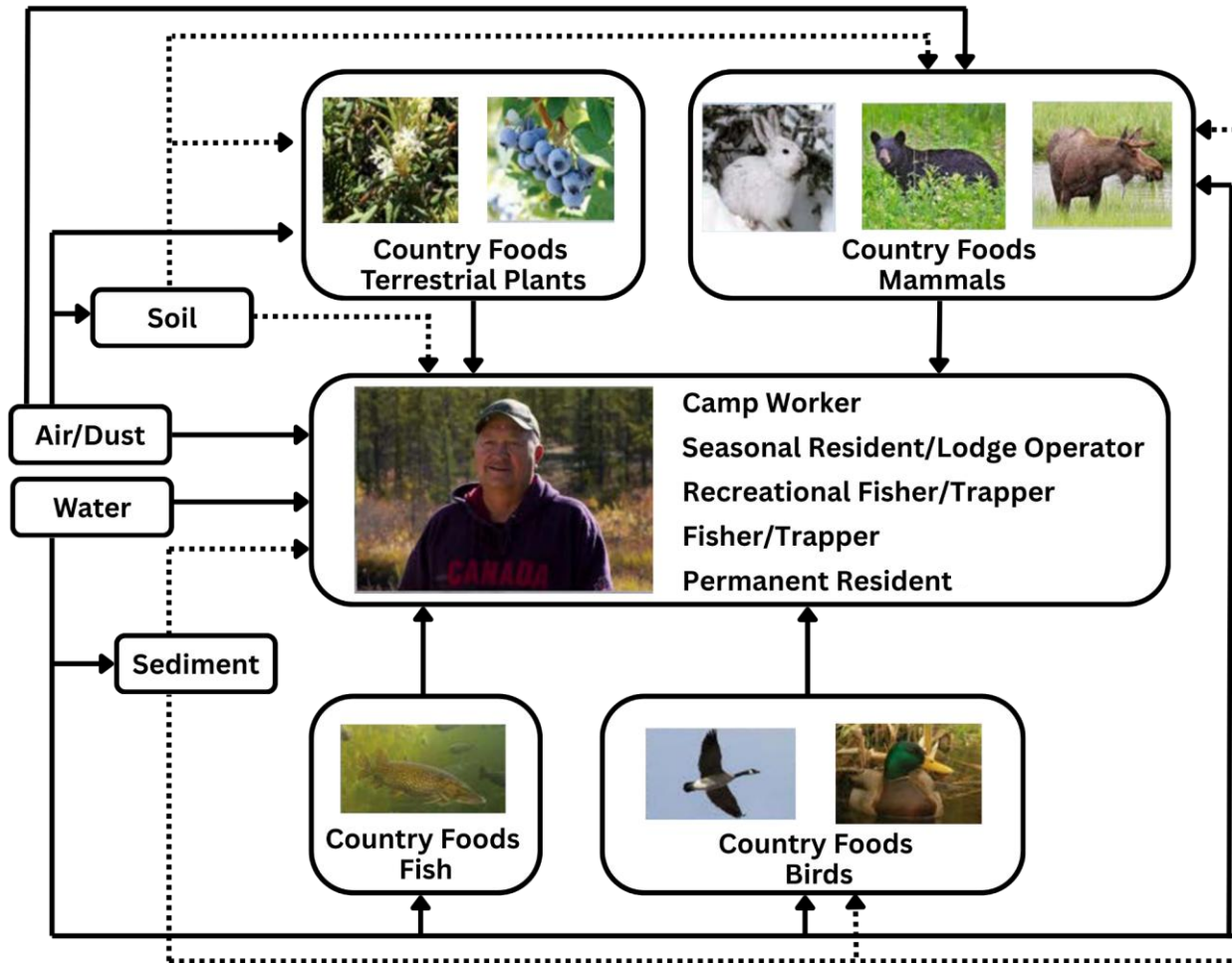
will be undertaken, including independent environmental monitoring.

Reclamation and Decommissioning

criteria has been established as part of the EA and will be confirmed with operational data to ensure long term protection of surface water.

Areas of Interest Throughout the Engagement Process

Human health protection



Protection of Human Health

was assessed in the EIS as part of the Human Health Risk Assessment for permanent **residents, seasonal residents, and camp workers.**

No Risk

from carcinogens,
non-carcinogens,
nor radiation dose.

Comprehensive Assessment

evaluated multiple exposure pathways including **ingestion, air, water, soil.**

Areas of Interest Throughout the Engagement Process

Cumulative effects within the regional context



Cumulative Effects Assessment

considers the **importance** of **managing** combined **potential impacts** on land, wildlife, and communities.

Independent Monitoring

will **support transparency** of results on potential effects, including those **downstream from the Project.**

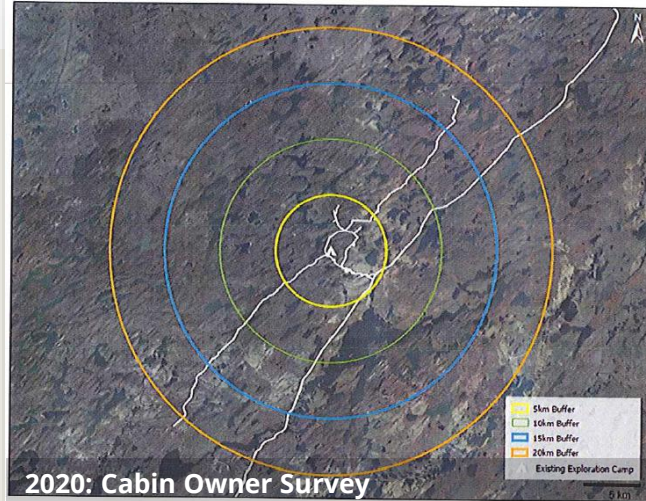
Regional Context

includes **existing uranium** operations and other activities.

Implementation of the Engagement Program

Local knowledge

Figure 1: Wheeler River Mine Project location



January 2020

WHEELER RIVER MINE PROJECT

CROWN RESOURCE LAND USE SURVEY

Please answer every question in the survey. After you have completed the survey, please return the survey in the attached self-addressed envelope. Your responses will be held in strict confidence and will not be shared individually with anyone. Results will only be reported in aggregate.

CABIN OR LAND LEASE USE

1. WHAT IS YOUR CROWN RESOURCE LAND LEASE USED FOR?

- ☐ Recreational cabin
- ☐ Traditional resource use cabin
- ☐ Commercial (fishing)
- ☒ Outfitting/Guiding
- ☐ Other (please specify):

2. HOW LONG HAVE YOU HAD YOUR LEASE?

- ☐ Less than 5 years
- ☐ 5-10 years
- ☐ 10-15 years
- ☒ More than 15 years

3. HOW MANY TIMES DO YOU GO TO YOUR CABIN OR LAND EACH YEAR?

- ☐ 0-1 times
- ☒ 2-3 times
- ☐ 4-5 times
- ☐ More than 5 times

4. HOW MUCH TIME IN TOTAL DO YOU NORMALLY SPEND AT YOUR CABIN OR LAND EACH YEAR?

- ☐ Less than 2 weeks
- ☐ 2-5 weeks
- ☒ 5-10 weeks
- ☐ More than 10 weeks

2020: Cabin Owner Survey

Page 1 of 6

Leaseholders included **cabin and other leaseholders** within 22-km radius of Project; specific interests in Project area.

Local Service Providers from **local** communities; specific information about socioeconomic conditions.

ERFN Trapper subject matter expert of Project area in relation to past, present and future ERFN land use activities.

Implementation of the Engagement Program

Indigenous knowledge



Based on a Respectful Process

that is considerate, confidential, and consent-based.

English River First Nation

Kineepik Métis Local #9

Ya'thi Néné Lands and Resources

Métis Nation - Saskatchewan

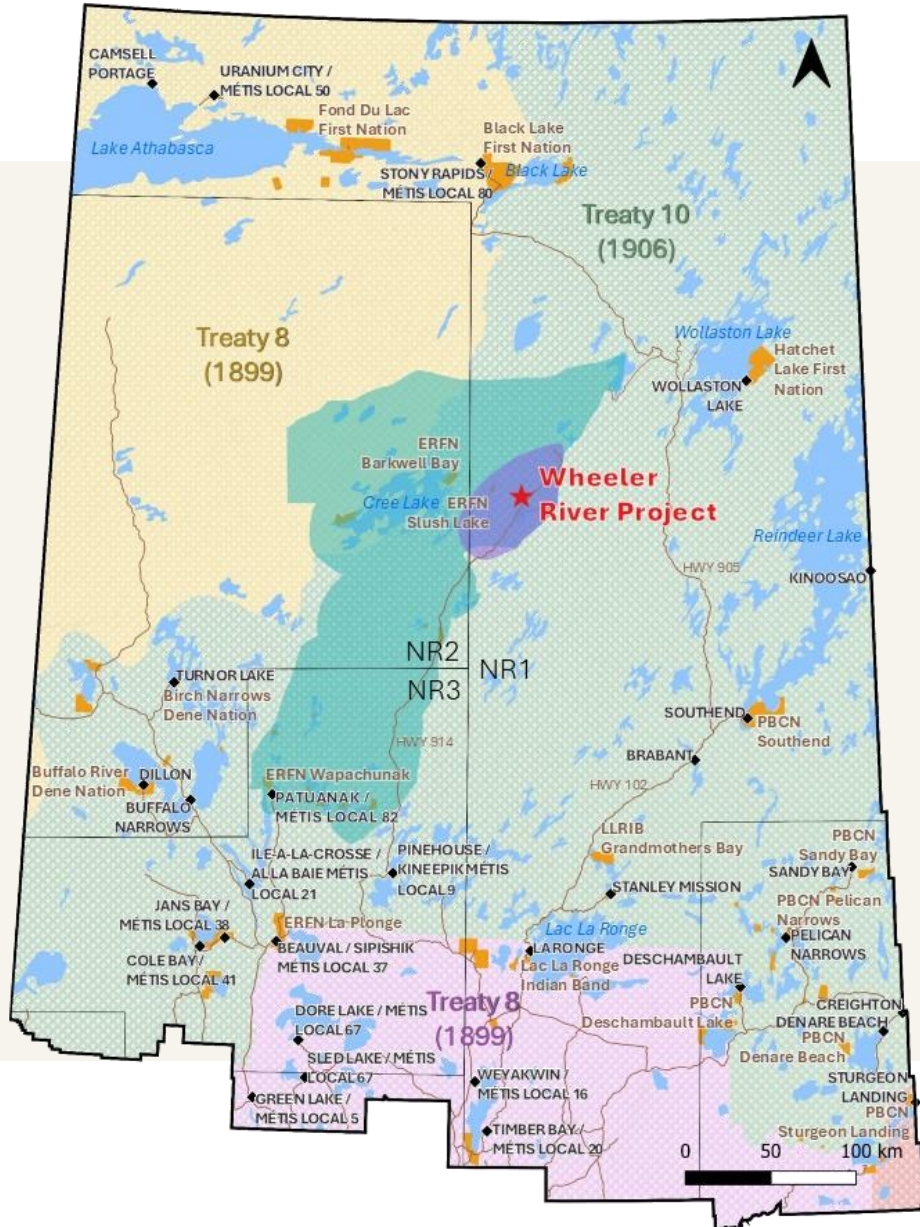


English River First Nation



Implementation of the Engagement Program

Assessment of effects to Indigenous land and resource use



Project Relationship to Resource Activities

- ❑ Potential changes to fish, wildlife or plants.
- ❑ Potential changes to land and water.
- ❑ Potential changes to the quality of experience.

Local Study Area

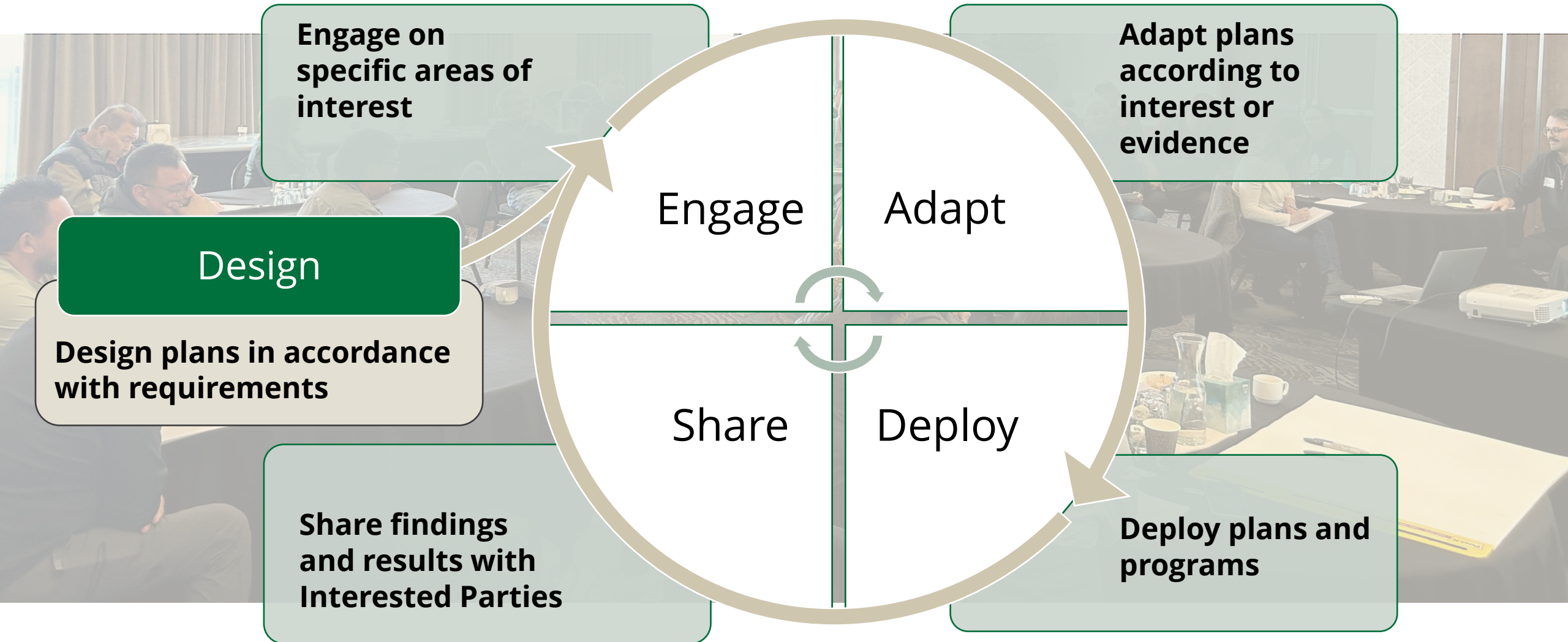
boundaries were **defined** to be **protective** of lands and resources within approximately **2,600 square kilometres**.

Regional Study Area

boundaries were defined as trapping blocks **N-16** and **N-18**; approximately **29,000 square kilometres**.

Areas of Interest Throughout the Engagement Process

Monitoring, adaptive management, and the need for transparency



Building Partnerships and Advancing Reconciliation



**WHEELER
RIVER**



3

Actions Undertaken Following Part 1

Powering
**PEOPLE, PARTNERSHIPS
AND PASSION.**



Update to Commission

Commitment progress between Part 1 and Part 2 hearing

ID	Timeline Required By	Progress Summary	Current Status
EA3	Prior to site preparation activities.	<ul style="list-style-type: none"> DEN – Submitted 10/03/2025. 	Under CNSC review.
EA4	Prior to site preparation activities.	<ul style="list-style-type: none"> DEN – Submitted 9/25/2025. CNSC – Comments 11/4/2025. DEN – Response 11/14/2025. 	Under CNSC review.
EA5	Prior to site preparation activities.	<ul style="list-style-type: none"> DEN – Submitted 9/25/2025. CNSC – Comments 11/4/2025. DEN – Response 11/14/2025. 	Under CNSC review.
PD-01	Prior to freeze wall construction.	<ul style="list-style-type: none"> DEN – Submitted 10/03/2025. 	Under CNSC review.
PD-02	Prior to wellfield construction.	<ul style="list-style-type: none"> DEN – Submitted 10/03/2025. 	Under CNSC review.
PD-03	Prior to construction of water infrastructure.	<ul style="list-style-type: none"> DEN – Submitted 10/03/2025. 	Under CNSC review.
PD-04	Prior to mill construction.	<ul style="list-style-type: none"> DEN – Submitted 10/03/2025. 	Commitment closed.
PD-05	Prior to construction activities.	<ul style="list-style-type: none"> DEN – Submitted 10/07/2025. 	Under CNSC review.
EMFP-01	Prior to construction activities.	<ul style="list-style-type: none"> DEN – Submitted 9/23/2025. 	Commitment closed.

EA – Environmental Assessment; PD – Physical Design; EMFP – Emergency Management & Fire Protection

4

Conclusion

Powering
**PEOPLE, PARTNERSHIPS
AND PASSION.**



Request of the Commission

Denison is seeking

- ✓ A positive Commission decision on the Environmental Assessment for the Wheeler River Project under the Canadian Environmental Assessment Act (2012); and
- ✓ A Licence to Prepare a Site for and Construct a Uranium Mine and Mill under the Nuclear Safety and Control Act.

Denison is qualified

to undertake the activities that the licence will authorize and will, in carrying on these activities, make adequate provision for the protection of:

- ✓ the environment,
- ✓ the health and safety of persons,
- ✓ the maintenance of national security, and
- ✓ the measures required to implement international obligations to which Canada has agreed.



Thank you

Powering
**PEOPLE, PARTNERSHIPS
AND PASSION.**