



CMD 25-H9.15A

Date: 2025-11-24

Supplementary Information

Presentation from the Ya'thi Néné Lands and Resources Office

In the matter of

Denison Mines Corporation

Licence Application to Prepare Site and
Construct for Denison Mines' Wheeler
River Mine and Mill Project

Commission Public Hearing Part 2

December 8-11, 2025

Renseignements supplémentaires

Présentation du Bureau des terres et des ressources de Ya'thi Néné

À l'égard de

Denison Mines Corporation

Demande de permis pour la préparation de
l'emplacement et la construction du projet
de mine et d'usine de concentration
d'uranium Wheeler River de Denison Mines

Audience publique de la Commission Partie 2

8-11 décembre 2025

Response to:

Denison Wheeler River Project: Request to develop an in-situ recovery uranium mining and processing operation

Presented by:

Ya'thi Néné Lands and Resources

December 9, 2025



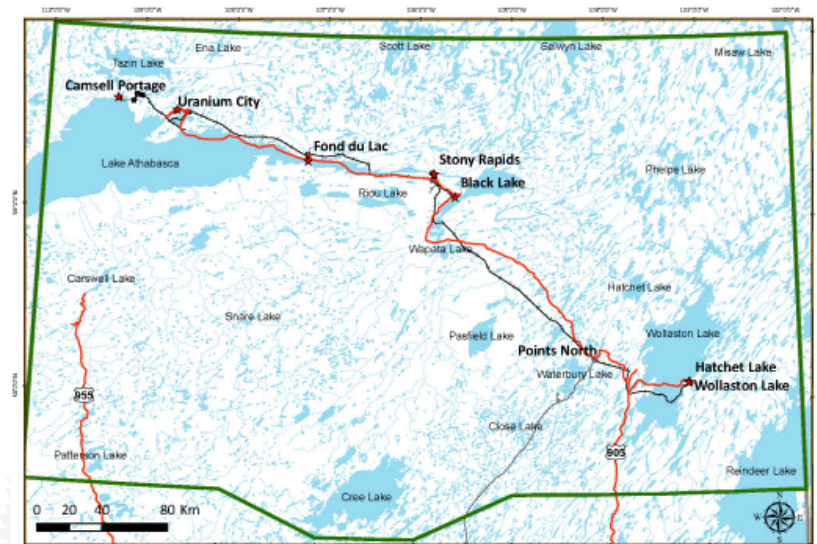


Ya'thi Néné Lands and Resources (YNLR)

Mission:

To protect the lands and waters of the Athabasca Basin for the long-term benefit of its Denesulíne First Nations and Athabasca communities

Nuhenéné (Traditional Territory)



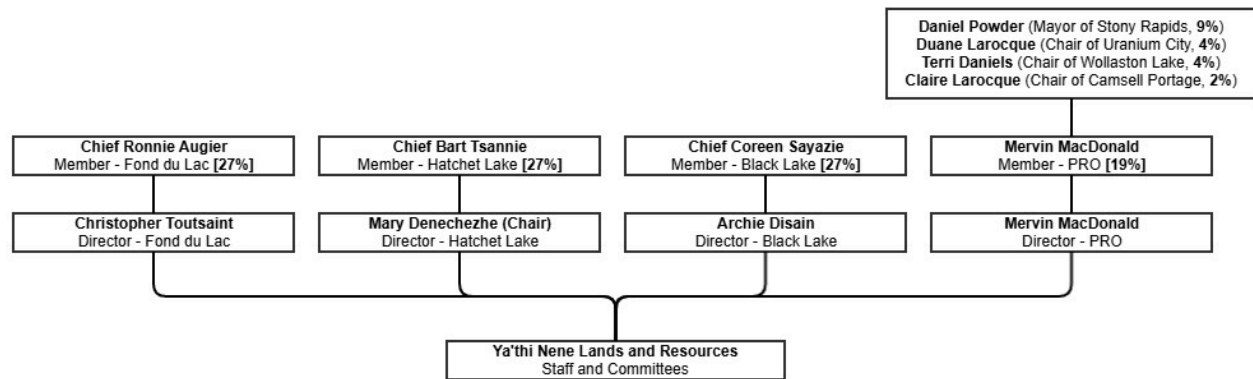


Athabasca Denesųłiné & Basin Communities

- YNLR is owned by the **7 Athabasca communities**:
 - Black Lake First Nation
 - Fond du Lac First Nation
 - Hatchet Lake First Nation
 - Stony Rapids
 - Wollaston Lake Post
 - Uranium City
 - Camsell Portage
- Communities united to protect Nuhenéné and ensure responsible development.

Governance

Our Leaders mandate YNLR to safeguard Nuhenéné and advocate for Basin residents.



YNLR Staff and Offices: Uranium City, Fond du Lac, Black Lake, Hatchet Lake, Saskatoon



Garrett Schmidt – Executive Director

Dana Kellett – Manager of Environment

Katherine Hay – Manager of Corporate Affairs

Bruce Hanbidge – Strategic Advisor

Megan Wallace – Environmental Land Use Planner

Steven Foti – Project Manager

Celeste Robillard – Administrative Coordinator

Ashley Robillard – Admin/Comms Assistant

Keesha Martin – ENSA Coordinator

Tina Giroux – Contract ENSA Project Manager

Linda McNabb – Contract Human Resources

May-Britt Jensen – Contract Workforce Development

Fond du Lac – Jason Adam, Morgan Lidguerre

Black Lake/Stony Rapids - Vacant

Hatchet Lake/Wollaston –Jean Tsannie, Curtis Tsannie, Thomas Besskkaystare

Uranium City - Margaret Powder, Wavne Powder



Ya'thi Néné's Role

- Prior to YNLR, Athabasca communities were largely uninformed about exploration and mining projects and received little benefits
- Damage to the lands and waters occurred
- Now, YNLR liaises between communities, industry, and government on projects of mutual interest and has formal agreements with multiple exploration and mining companies
- To strengthen the relationship and support the discussion of issues or concerns, YNLR and CNSC established a Terms of Reference in 2022



Relationship with Industry

- YNLR has relationships with numerous resource companies operating in the Athabasca Basin
- Partnerships are based on respect, transparency, and shared commitment to stewardship and collaboration



How We Protect Nuhenéné



- Consultation and engagement
- Environmental reviews
- Environmental monitoring
- Policy and technical analysis



Current and Forthcoming Work

- Site inspections by CLTs
- Environmental monitoring and Traditional Knowledge gathering
- Woodland caribou/cumulative effects monitoring
- Etthén Néné Stewardship Areas (long-term land protection initiative)



Etthén Nene Stewardship Areas (ENSA)

Community-driven land stewardship

Finding balance:

- Optimizing sustainable development
 - Economic opportunities
 - Strengthening partnerships
- Beneficial protection
 - Cultural resilience
 - Wildlife and environment





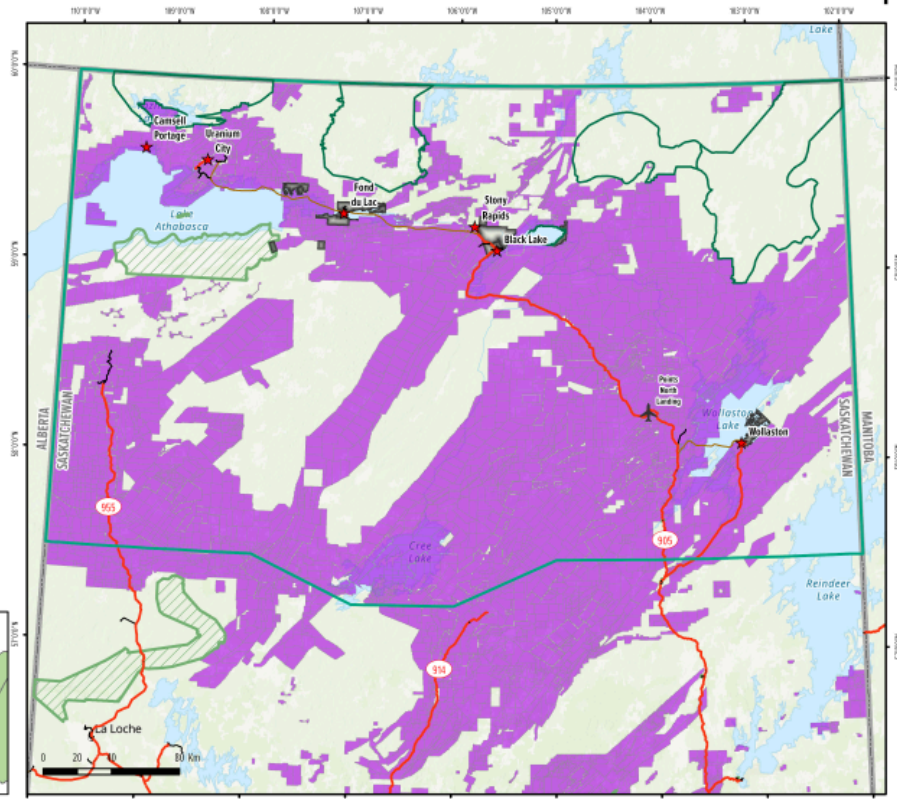
Industry and ENSA



- Ethi'á Néné Stewardship Area
- Muhénié
- Athabasca Communities
- Points North
- Highways
- Winter Roads
- Other Roads
- All Parks as Legislated
- Athabasca Reserves
- Mineral Dispositions
- Provincial Boundary

Map Scale:
1:2,500,000

BASemap INFORMATION SOURCES:
Census
Government of Saskatchewan
Natural Resources Canada (NRCan)



This information was created solely for a specific purpose within the Athabasca Denesuline First Nations. Any use must be approved by Yá'í Néné Lands and Resources Office. NAD 1983 UTM Zone 13N. October, 2025

YNLR's Involvement in IEMP



YNLR appreciates our involvement with the IEMP each year

- Conduct interviews to help determine sampling locations and traditional foods to include in sampling
- Staff participate in field work
- Residents can donate food they want tested
- Great example of how remote Indigenous communities can work directly with regulators



Overview of our Intervention

- Consultation
- Cumulative Effects
- Water Quality & Fish
- Wildlife (Caribou)
- Environmental Monitoring & Indigenous Involvement

Understanding the Wheeler River Project

- In-situ recovery (ISR) uranium mine
- Approximately 9 million lbs/year
- 15-year operation



YNLR's Engagement with Denison



- Multi-year review of the EIS
- Exploration Agreement in 2022
- Regular meetings between YNLR, Denison, and CNSC
- Collaborative progress

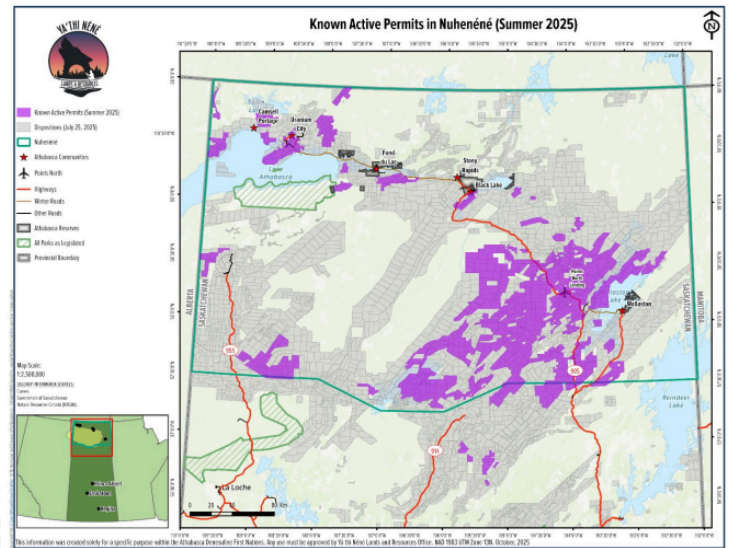
Respectful and Meaningful Consultation

- Consultation must be ongoing, timely, and transparent
- Indigenous knowledge must be central



Cumulative Effects: Our Biggest Concern

- Nuhenéné is facing a minimum of 20,400 km of linear disturbance
- Rapid growth of mineral claims
- Cumulative effects reduce the ability to practice traditional land use and exercise and uphold Treaty Rights



Woodland Caribou

- Provincial Ministerial Decision requires a caribou plan and offsets
- Need Indigenous review and input on these plans
- Habitat fragmentation is a critical concern



Water Quality and Fish Health

- ISR requires strong groundwater protection
- Communities depend on clean water for drinking, fishing, tourism, travel
- Past mistakes and experience (including Beaverlodge) heighten concern



Lessons from Beaverlodge

- Legacy contamination remains
- ICP transfer was opposed by all seven Basin communities
- Importance of early planning, financial assurance, and long-term monitoring



Environmental Monitoring Needs



- Monitoring must include:
- Aquifer behaviour
- Water quality
- Wildlife movement
- ISR recovery trends
- Surface water
- Indigenous access to summarized and/or raw field data in real time



Indigenous Involvement in Monitoring

- Indigenous-led, co-designed monitoring program
- Data sharing agreements
- Employment & training opportunities
- Community confidence

Closure and Reclamation Planning

- Must start now, not at end of mine life
- Strong financial assurance
- Clear long-term responsibilities



Key Recommendations

- Early review of all monitoring plans
- Indigenous-led environmental monitoring
- Cumulative effects considered holistically
- Strong closure and reclamation planning
- Transparent data sharing
- Ongoing, meaningful consultation

The Importance of Protecting Nuhenéné

- Our homeland must be protected for future generations
- We support development that aligns with respect, transparency, safety, and sustainability



Path Forward with Denison and CNSC



- Commitment to continued collaboration
- Community-driven monitoring
- Building a shared vision for responsible development

Marsi cho!

YA'THI NÉNÉ LANDS AND
RESOURCES
100 – 335 PACKHAM AVENUE
SASKATOON, SK S7N 4S1

T: 306-477-1251
F: 306-802-4800
E: ADMIN@YATHINENE.COM YATHINENE.CA

