



Supplementary Information

Presentation from the NB Health Emergency Operations Center, New Brunswick Department of Health

In the Matter of the

**New Brunswick Power Corporation,
Point Lepreau Nuclear Generating Station**

Application for the renewal of NB Power's
licence for the Point Lepreau Nuclear
Generating Station

**Commission Public Hearing
Part 2**

May 10 to 12, 2022

Renseignements supplémentaires

Présentation du Centre des opérations d'urgence du ministère de la Santé du N.-B., Ministère de la santé du Nouveau-Brunswick

À l'égard de la

**Société d'Énergie du Nouveau-Brunswick,
centrale nucléaire de Point Lepreau**

Demande de renouvellement du permis
d'Énergie NB pour la centrale nucléaire de
Point Lepreau

**Audience publique de la Commission
Partie 2**

10 au 12 mai 2022

Provincial Health Nuclear Emergency Preparedness

2022 Public Hearing
on NB Power's Application for
License Renewal for PLNGS

GOALS of Health Nuclear Emergency Response

To achieve the International Atomic Energy Agency (IAEA) goals for medical response to nuclear or radiological emergency, which are to:

- save lives and perform required emergency medical procedures;
- treat radiation injuries and injuries resulting from an emergency situation; and
- perform required public health actions, including public advice and counselling.

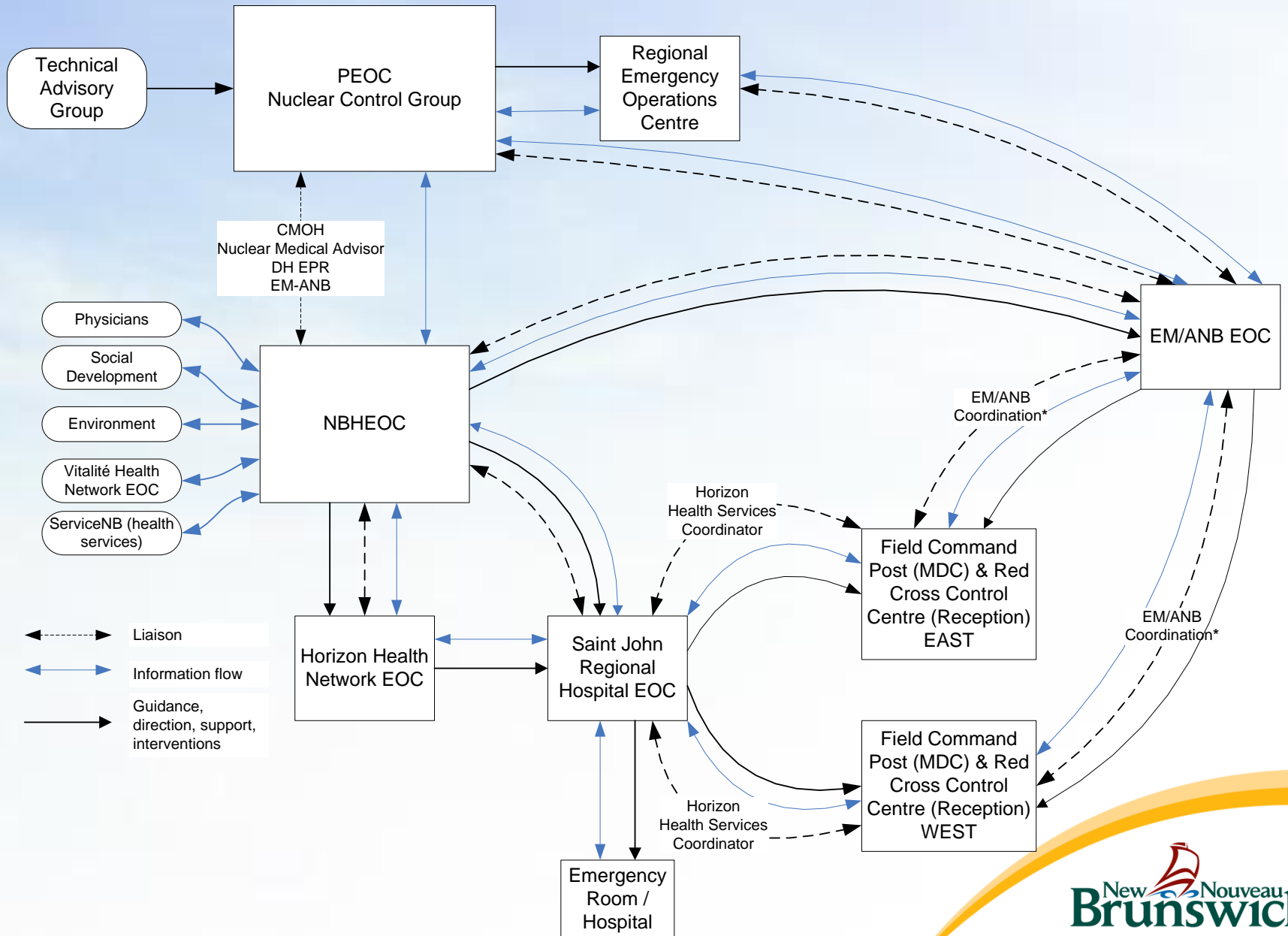
Provincial Health Nuclear Emergency Plan

- Describes the roles, responsibilities and actions necessary for an effective health system response to a nuclear emergency
- Supplements the Dept. of Health, Ambulance NB and Horizon Health Network's all-hazards emergency plans
- Primarily focused on an off-site nuclear emergency at PLNGS but can capabilities can be extended to an on-site emergency.

Preparedness: Training, Exercises, Collaborative Planning and Continuous Improvement

- Monthly **stakeholders meeting** hosted by NB EMO
- Annual meetings of **Provincial Health Nuclear Emergency Planning Committee**
- Annual health system **plan review**
- NB Health **EOC training and nuclear plan review** every 3 years
- Participation in **full-scale provincial exercise** every 3 years and associated **after-action review process**
- Participant in NB EMO led, **capability-specific table-top exercises and drills**
- Training and exercising with PLNGS and **front-line SJRH staff**

Response Concept



PLAN COMPONENTS: HEALTH ROLES AND CAPABILITIES

Designated Hospital for Radiation Contaminated Casualties

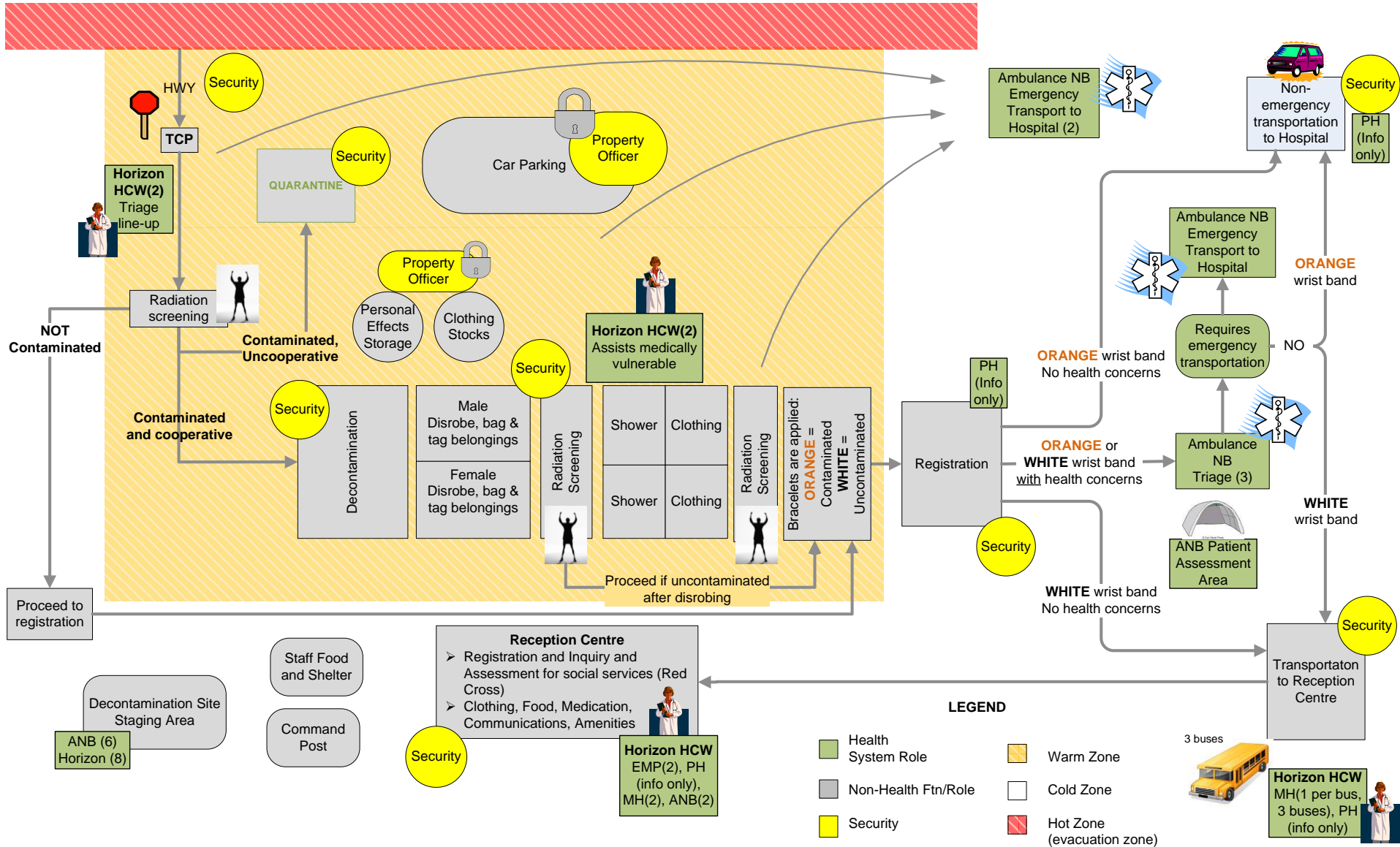
Saint John Regional Hospital

- Level 1 trauma facility with the necessary infra structure and 24/7 medical and surgical specialist coverage.
- Critical care specialists and a range of allied health professionals are available round the clock.
- High level of diagnostic imaging and lab facilities.
- Radiation Medicine and Nuclear Medicine specialists.
- Provides medical/clinical direction to SJRH staff and field health staff.

Technical Advisory Group

- Health Membership
 - Chief Medical Officer of Health or designate.
 - Radiation Medical Advisor
- Orders for shelter-in-place, evacuation and KI to be based on *Health Canada's Generic Criteria and Operational Intervention Levels for Nuclear Emergency Planning and Response* guidelines.

Monitoring & Decontamination Centres



Psychosocial Response

- Support to public in MDCs, reception centres and town hall sessions
- Provide subject matter expertise in public messaging
- Community in Crisis Response
- CISM for First Responders
- Maintenance of Essential/Critical Services to the greater community

Public Health Guidance and Messaging

- Provision of public health guidance and advice related to air quality, as well as the safety of food and water in the area affected by the emergency
- Provision of nuclear-related health and care information to residents of the province of New Brunswick who access the Tele-Care 811 system
- Guidance and advice on Public Health measures such as quarantine, care of the deceased, KI administration
- Collaborate with Provincial Radiation Medical Advisor radiation on medical issues

Public Health Brochure Frequently Asked Questions

Radiation Exposure
from Nuclear Power
Plant Incidents



Reception Centres

All uncontaminated and decontaminated evacuees to be directed to a Reception Centre for registration before being allowed to proceed independently if they do not require any of the emergency social services offered.

- Psychosocial support provided by RHA Addictions and Mental Health.
- Extra-mural Program will support existing clients.
- Ambulance NB will maintain a presence for the first 24 hours for first aid and medical response.
- Process to access prescription medications.

Management of Decedents Contaminated with Radioactive Material

- Concept is designed to limit radiation exposure to death care workers to effective dose limit for the public ($1\mu\text{Sv}/\text{year}$).
- Scope of plan:
 - Radiation Protection
 - Roles and responsibilities for health and external stakeholders
 - Concept of operations for field settings and for hospitals, with and without a release of radioactive material.
 - Guidance: Funeral practices, Embalming, Cremation, Burial, Transportation of remains

RECOVERY

- Registry: All evacuees will register at the same centre after being assessed for contamination and if required, sent to the decontamination line. The NB Cancer Network will retain registry information
- Provision of appropriate post-emergency, long-term health services to affected persons.
- Public health guidance and advice on air, water, soil and food.
- Public health issuance of public messaging and advisories

Questions?