



Supplementary Information

Written submission from Ontario Power Generation Inc.

(in response to comments made by
Northwatch in submission
CMD 21-H4.43)

In the Matter of the

Darlington New Nuclear Project

Application to renew the nuclear power
reactor site preparation licence for the
Darlington New Nuclear Project

Commission Public Hearing

June 10-11, 2021

Renseignements supplémentaires

Mémoire d'Ontario Power Generation Inc.

(en réponse aux commentaires exprimés
par Northwatch dans le mémoire
CMD 21-H4.43)

À l'égard de

Projet de nouvelle centrale nucléaire de Darlington

Demande de renouvellement du permis de
préparation de l'emplacement d'une centrale
nucléaire pour le projet de nouvelle centrale
nucléaire de Darlington

Audience publique de la Commission

10-11 juin 2021

Attachment 2 to OPG Letter, M. Knutson to M. Leblanc, "Supplemental OPG Written Submission – Application for Renewal of OPG's Darlington New Nuclear Project (DNNP) Nuclear Power Reactor Site Preparation Licence (PRSL)", CD# NK054-CORR-00531-10586.

(Attachment 1 is the presentation found in CMD 21-H4.1A)

ATTACHMENT 2

Drawings for Figures in OPG DNNP PRSL Renewal Application

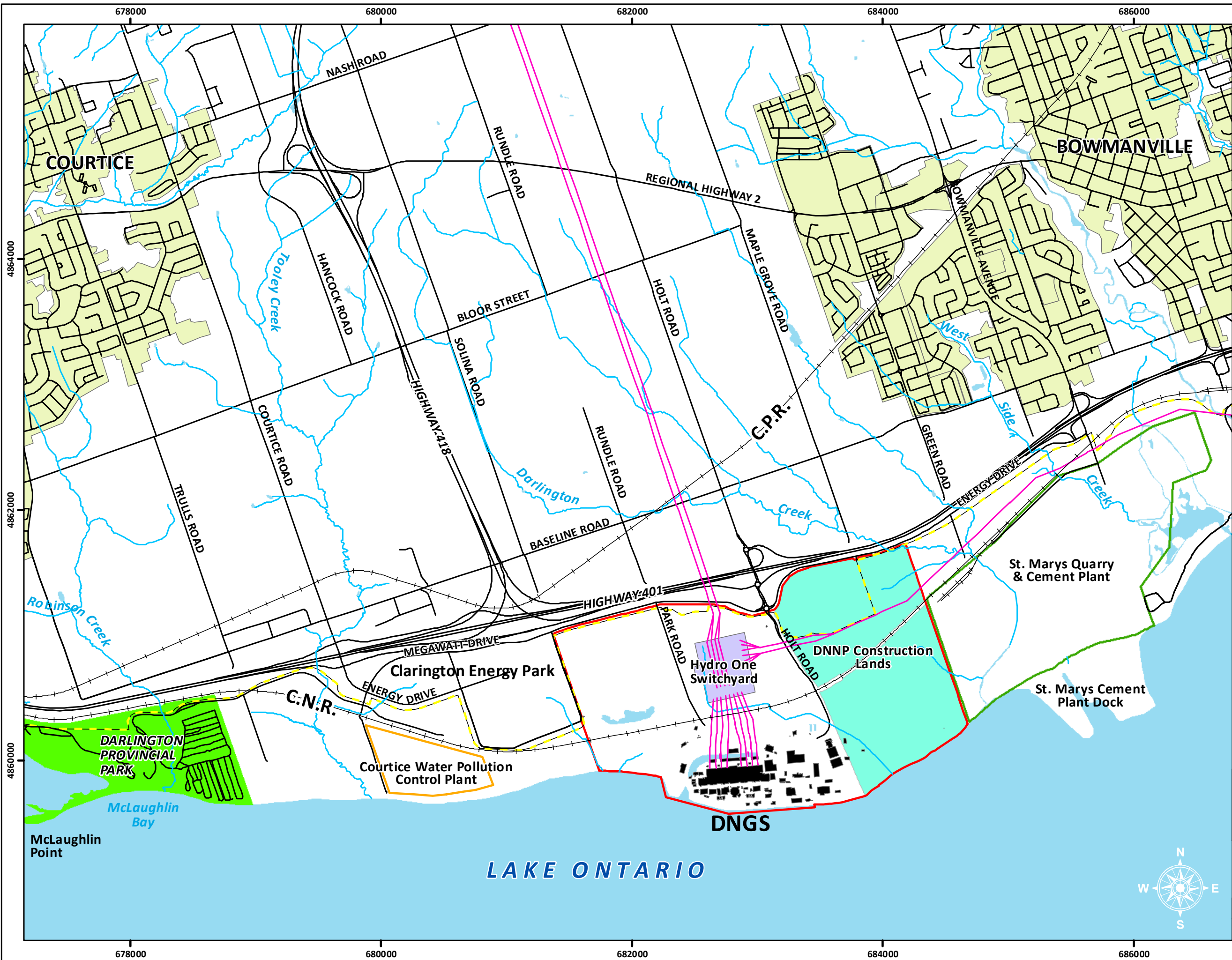
Figure 4: Location of Darlington Nuclear Site

Figure 5: OPG Darlington New Nuclear Project (DNNP) Survey Drawing (NK054-DRAW-01210-00007)

Referenced in Figure 5: Survey Drawing for DNNP Property North of CN Rail (NK054-DRAW-01210-00008)

Figure 6: Photograph of DN Site Illustrating DNNP Construction Site Boundary

Figure 7: DN Site Existing Contour Drawing (NK054-DRAW-01210-00003)

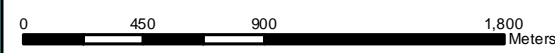


DISCLAIMER:
 © Ontario Power Generation Inc. 2019. This map has been produced and distributed for Ontario Power Generation Inc. purposes only. No part of this map may be reproduced, published, converted, or stored in any data retrieval system, or transmitted in any form or by any means (electronic, mechanical, photocopying, recording, or otherwise) without the prior written permission of OPG. The information on this map may not be accurate or up to date. OPG makes no representations or warranties, either express or implied, regarding this map. Any third party relies on the information in this map at its own risk and neither OPG nor any agent acting on OPG's behalf assumes any liability with respect to the use by a third party of this map. This map may contain data and other information sourced from Ontario Ministry of Natural Resources & Forestry and ESRI. This information is greatly acknowledged.

REFERENCE:
 © Queen's Printer for Ontario, 2020

Legend

- Darlington Nuclear Site
- DNNP Construction Lands
- Hydro One Switchyard
- Courtice Water Pollution Control Plant
- St. Marys Quarry & Cement Plant
- Large Industrial / Commercial Building
- Urban Centre
- Provincial Park
- Waterfront Trail
- Waterbody
- Watercourse
- Road
- Railway



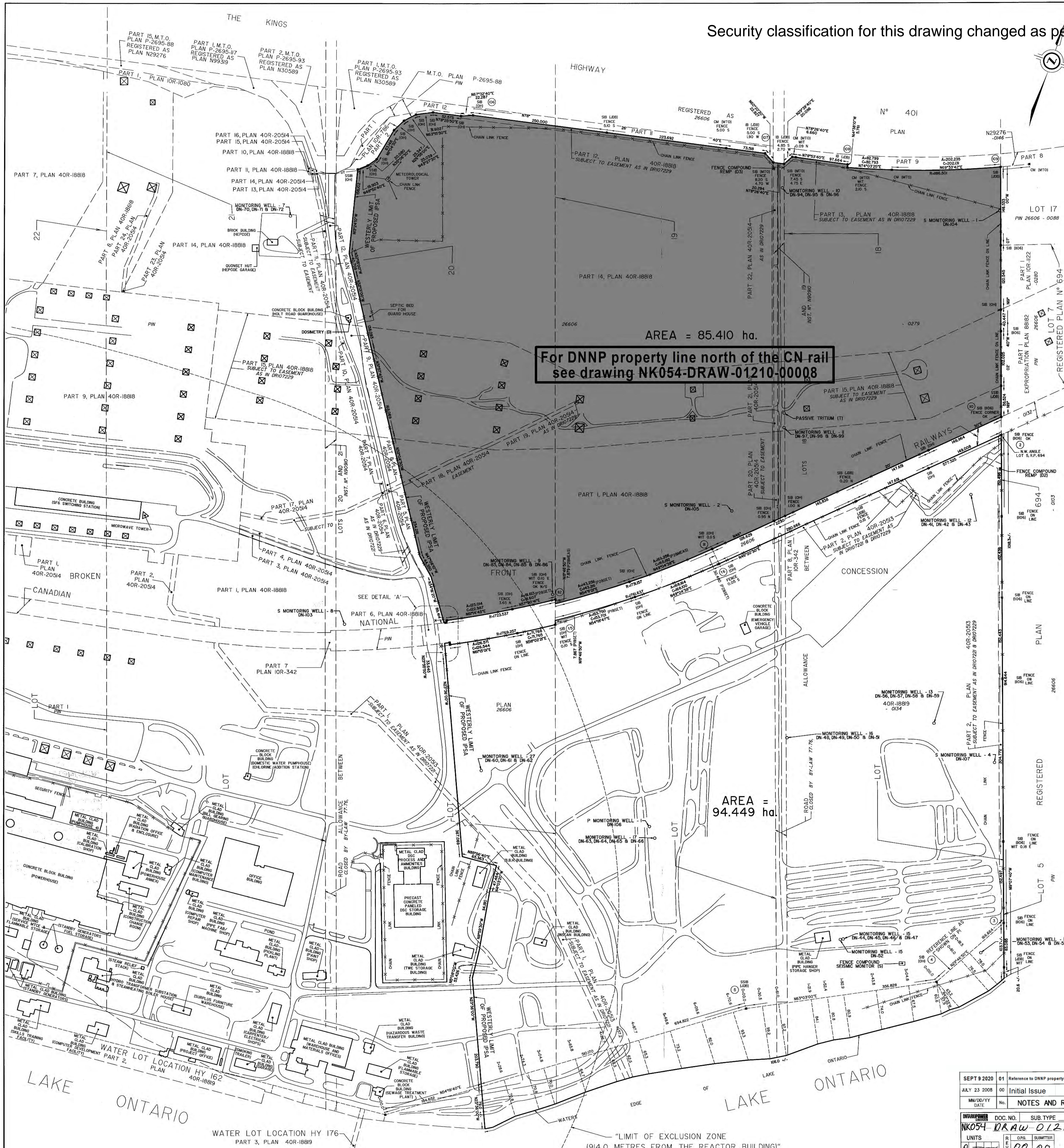
Location of Darlington Nuclear Site

ONTARIO POWER GENERATION Real Estate Services

scale: 1:28,250	version: 01	date - yr/month/day: 2020/04/29
units: Meters	coordinate system: NAD 1983 CSRS	zone: UTM 17N



Security classification for this drawing changed as per NK054-REF-01210-0853284



PLAN OF SURVEY OF PART OF LOTS 18, 19 AND 20 BROKEN FRONT CONCESSION AND PART OF THE ROAD ALLOWANCE BETWEEN LOTS 18 & 19 BROKEN FRONT CONCESSION (CLOSED BY BY-LAW 77-76, INST. M 1000/80) GEOGRAPHIC TOWNSHIP OF DARLINGTON NOW IN THE MUNICIPALITY OF CLARINGTON REGIONAL MUNICIPALITY OF DURHAM SCALE 1:2500

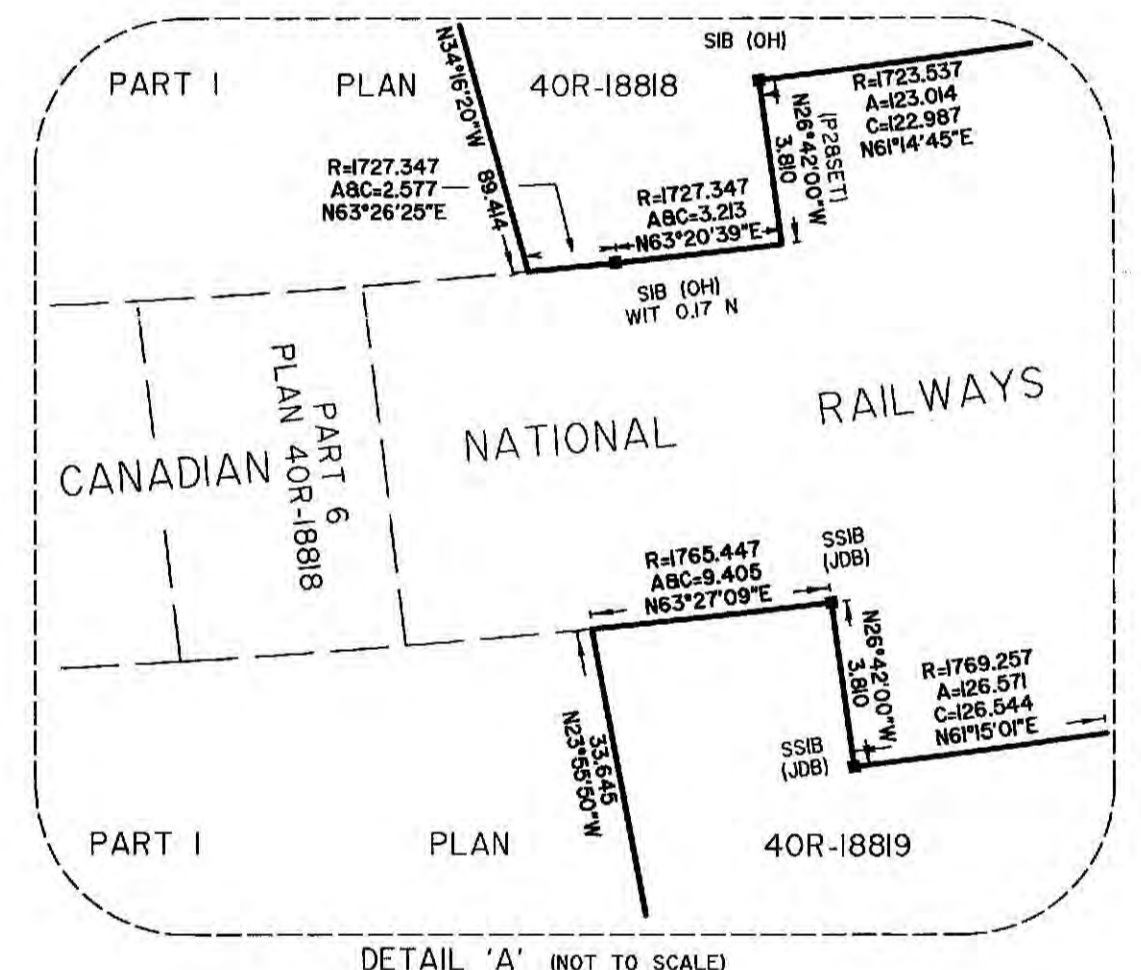
J. D. BARNES LIMITED METRIC DISTANCES SHOWN ON THIS PLAN ARE IN METRES AND CAN BE CONVERTED TO FEET BY DIVIDING BY 0.3048. NOTES BEARINGS HEREON ARE GRID BEARINGS AND ARE DERIVED FROM CONTROL MONUMENTS 03862597 (E 658276.940 N 485038.345) AND 03841284 (E 654716.963 N 485022.233) AND ARE REFERRED TO THE CENTRAL MERIDIAN 87°00' WEST LONGITUDE, ZONE 17. DISTANCES ON THIS PLAN ARE GROUND DISTANCES AND CAN BE CONVERTED TO GRID DISTANCES USING A CORRECTED SCALE FACTOR OF 0.99999888.

LEGEND: DENOTES SURVEY MONUMENT FOUND, DENOTES SURVEY MONUMENT SET, DENOTES STANDARD IRON BAR, DENOTES SHORT STANDARD IRON BAR, DENOTES IRON BAR, DENOTES CUT CROSS, DENOTES CONCRETE MONUMENT, DENOTES MEASURED, DENOTES PLAN 40R-1888, DENOTES PLAN 40R-1889, DENOTES J.D. BARNES LIMITED, DENOTES ONTARIO HYDRO, DENOTES MINISTRY OF TRANSPORTATION ONTARIO, DENOTES DONEGAN & FLEESCHMANN G.L.S., DENOTES M.D. BROWN G.L.S., DENOTES HYDRO TOWER.

THE BUILDINGS SHOWN ON THIS PLAN WERE DERIVED FROM MAPPING PROVIDED BY ONTARIO HYDRO SURVEYS AND MAPPING DEPARTMENT, JOB # 095-079 DATED AUGUST 25, 1995 AND VERIFIED BY FIELD MEASUREMENTS AT THE TIME OF SURVEY.

THE WATERS EDGE OF LAKE ONTARIO WAS DERIVED FROM MAPPING PROVIDED BY ONTARIO HYDRO SURVEYS AND MAPPING DEPARTMENT, JOB # 095-079 DATED AUGUST 25, 1995 AND VERIFIED BY FIELD MEASUREMENTS AT THE TIME OF SURVEY.

THE ROADWAYS SHOWN ON THIS PLAN WERE DERIVED FROM MAPPING PROVIDED BY ONTARIO HYDRO SURVEYS AND MAPPING DEPARTMENT, JOB # 095-079 DATED AUGUST 25, 1995.



* For the purpose of showing DNNP land. Not to be relied on for engineering design.

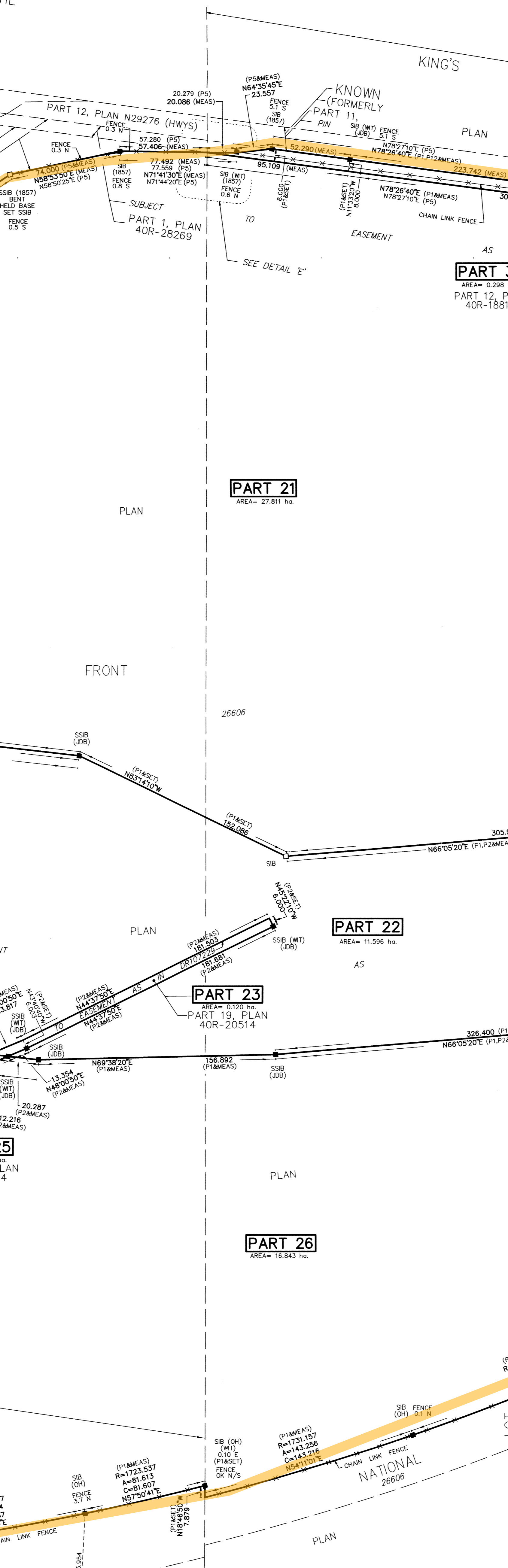
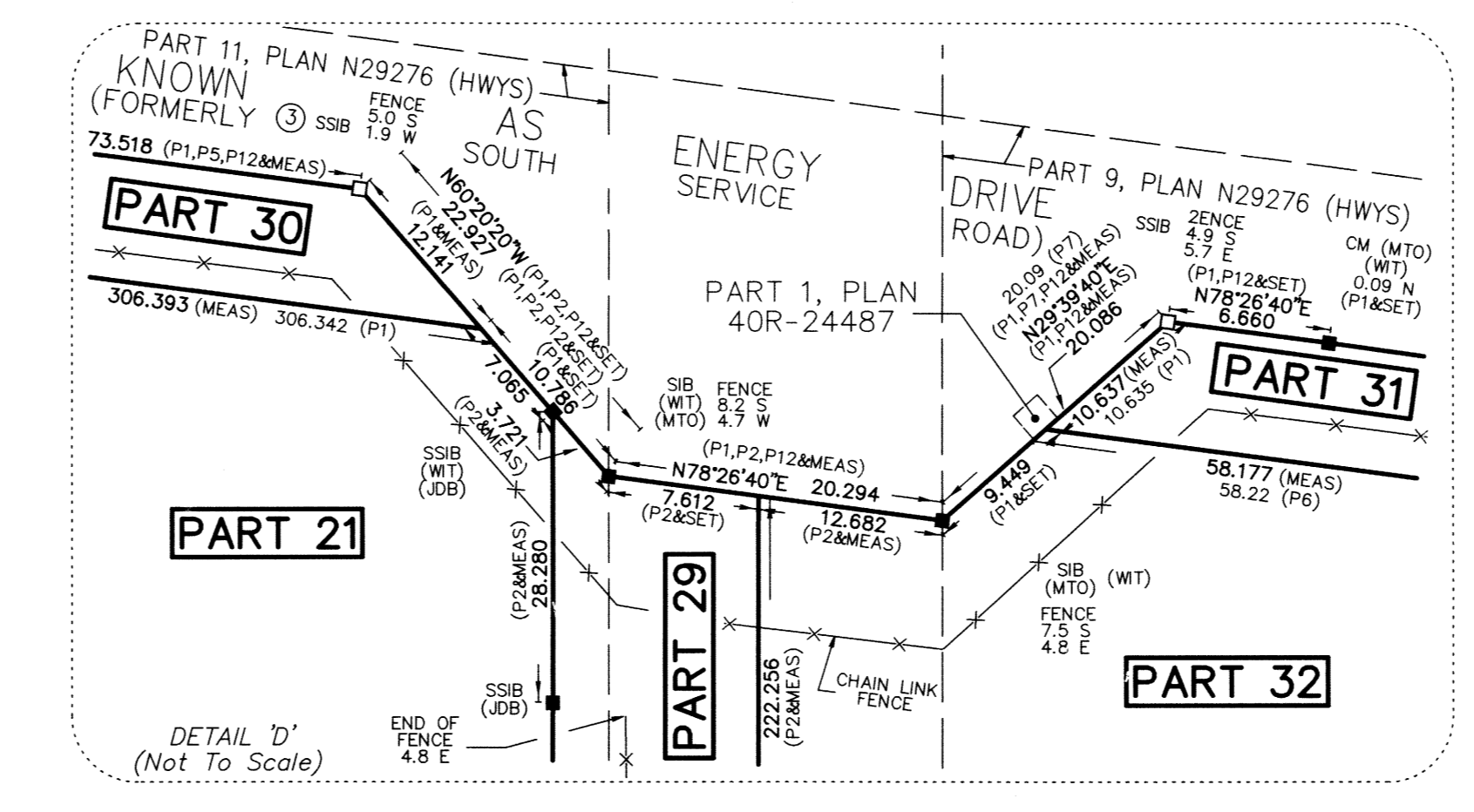
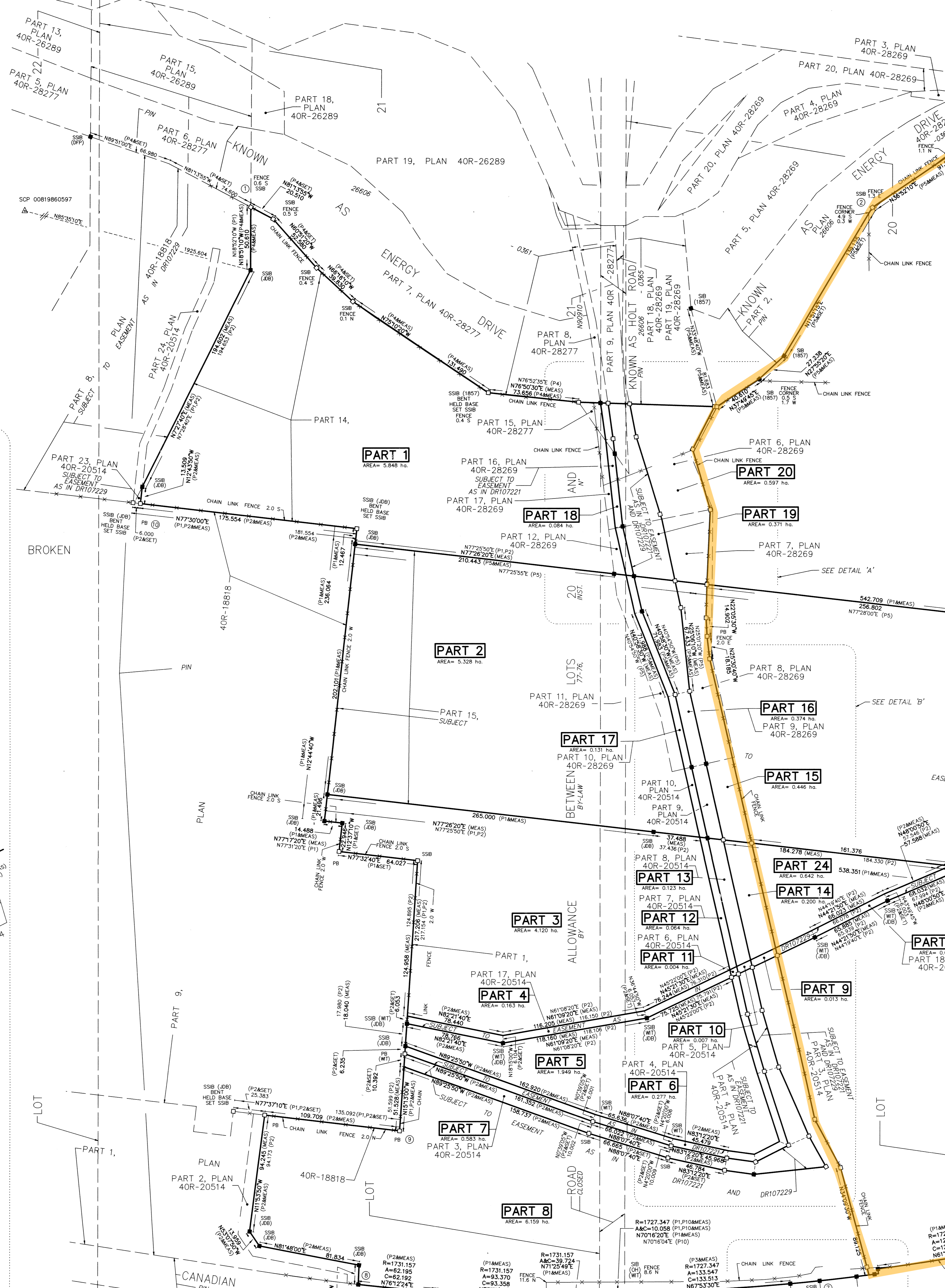
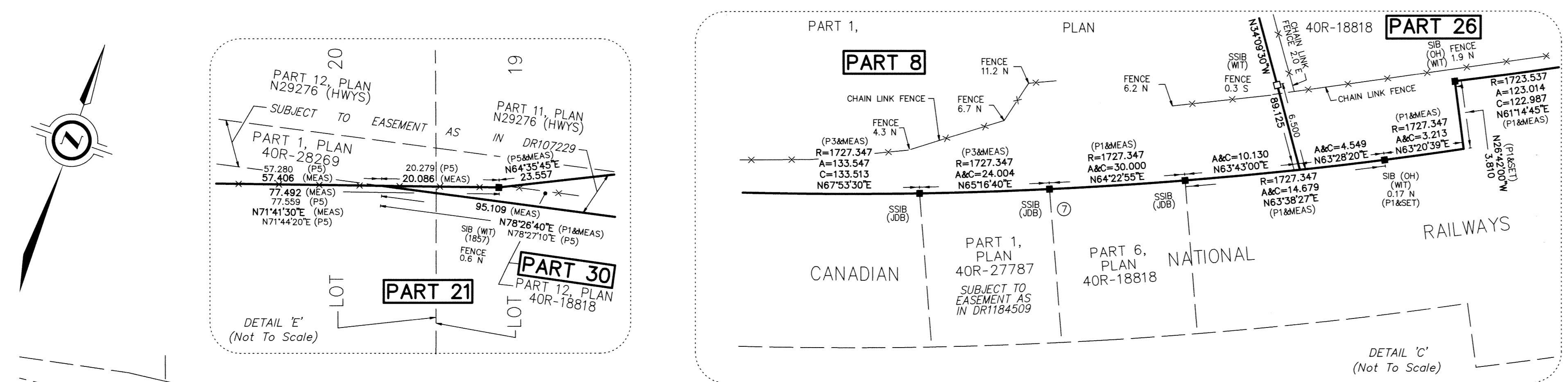
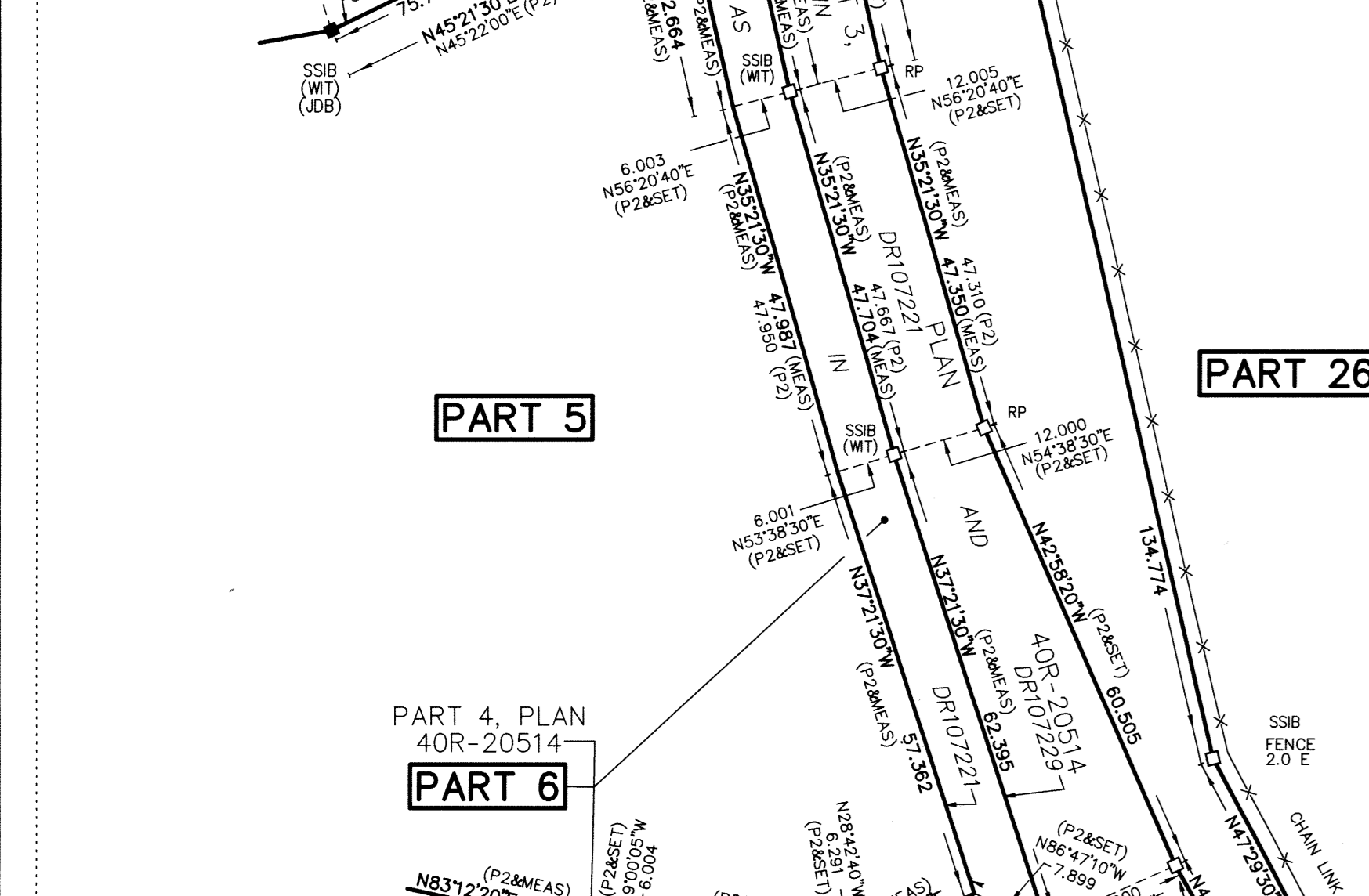
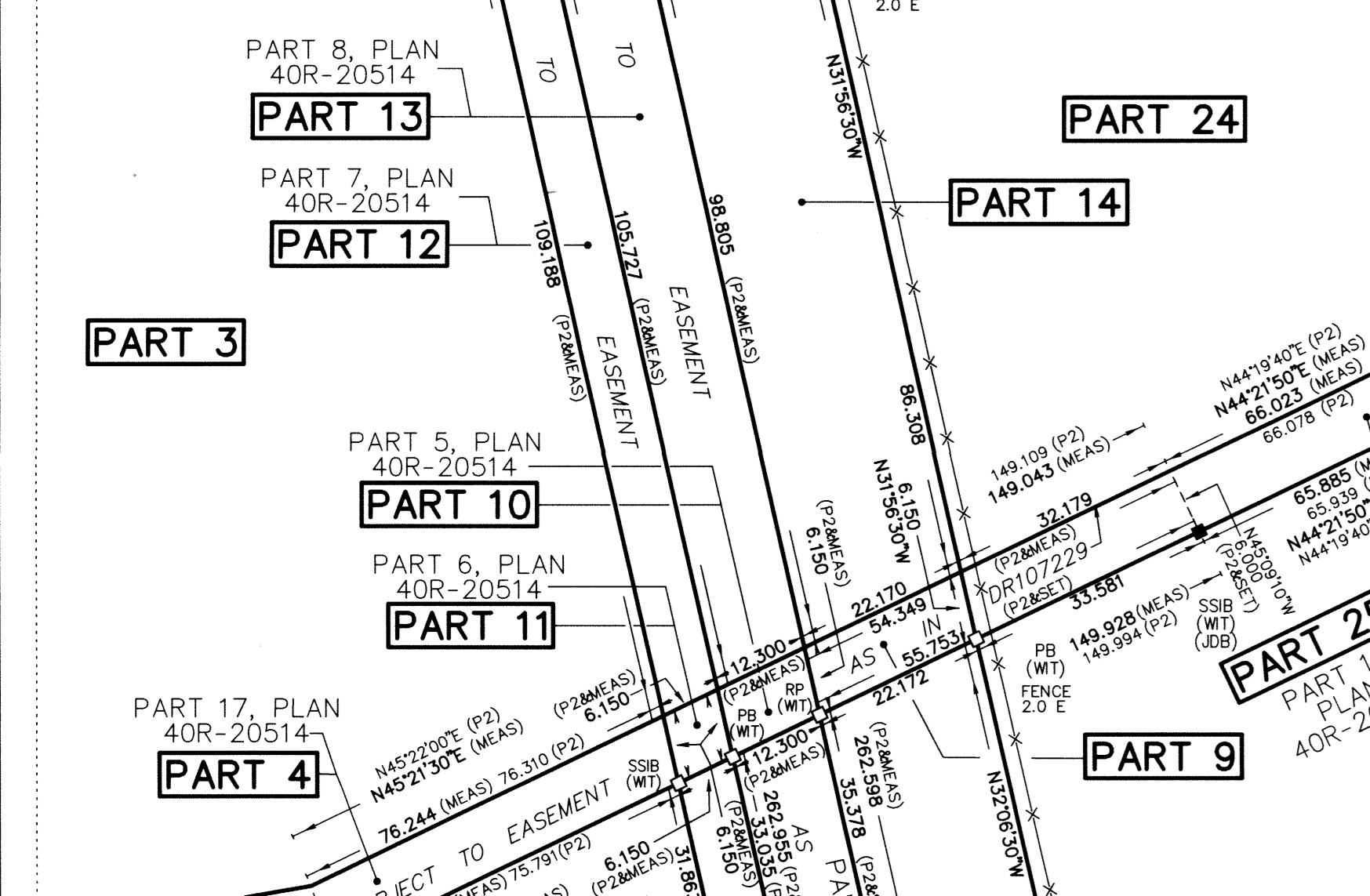
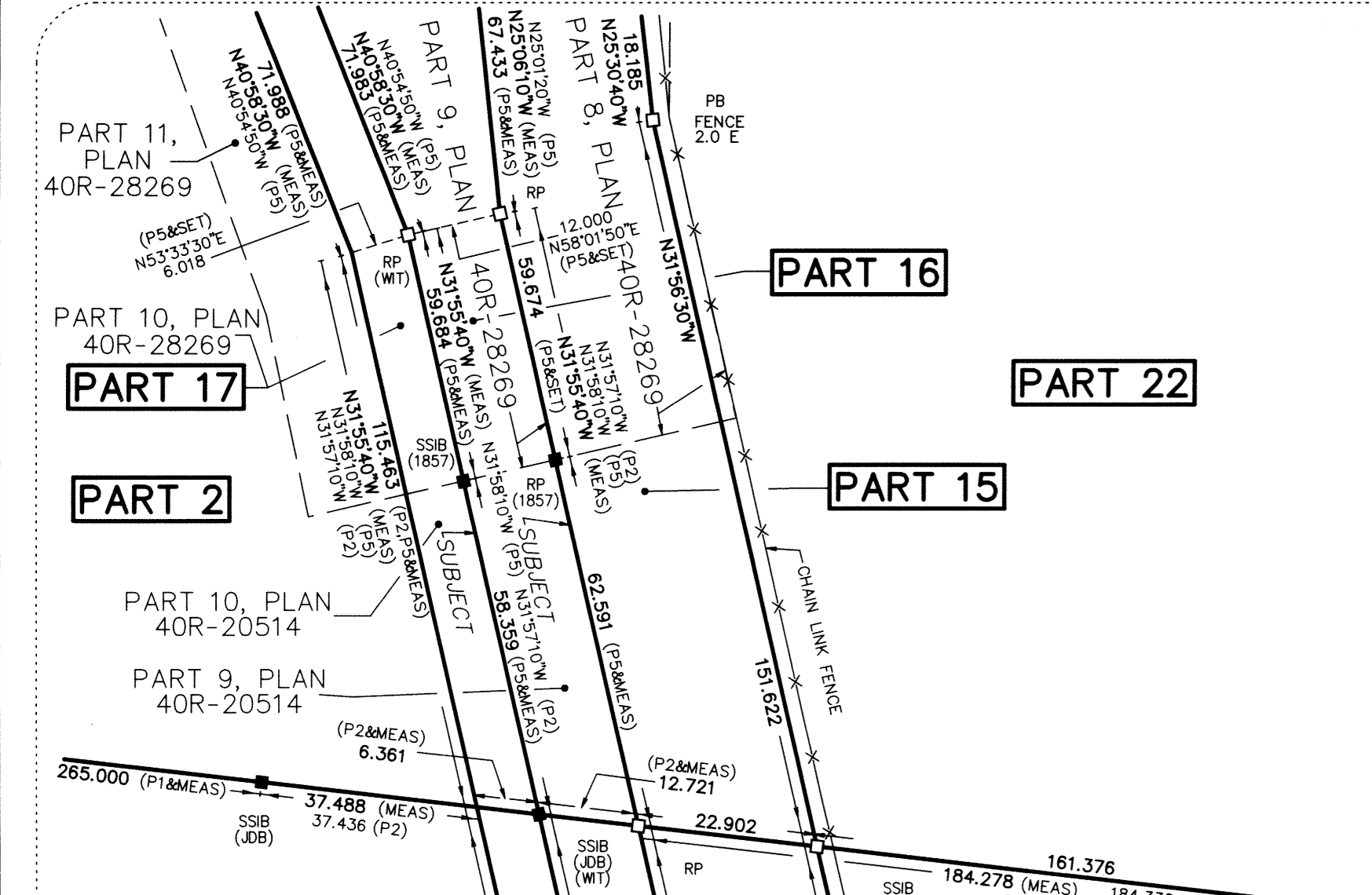
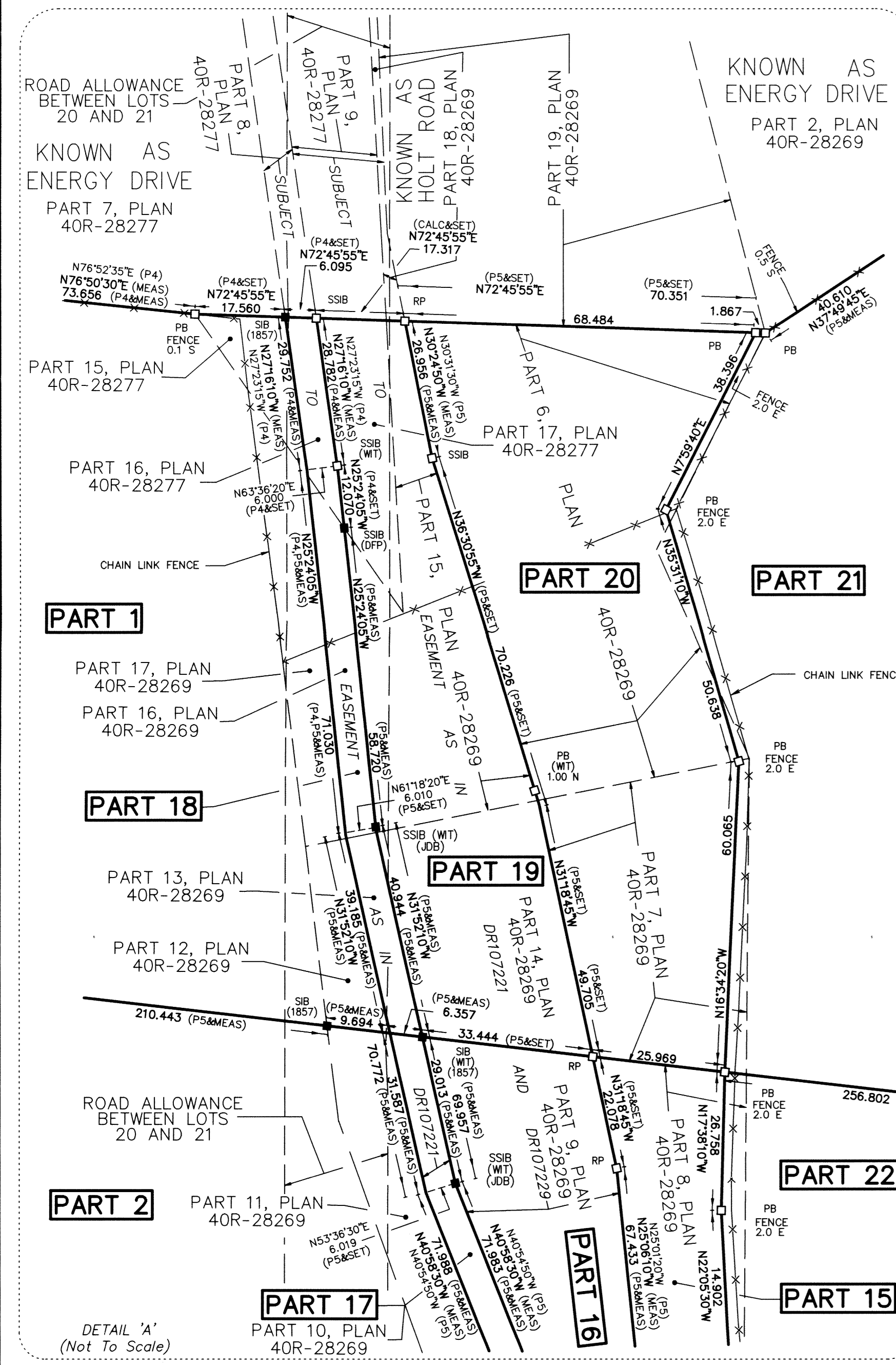
ONTARIO POWER GENERATION ACCEPTED AS NOTED REVERSE AND PERMIT SIGNATURE: David Eden DATE: November 25, 2008 NAME: David Eden DEPARTMENT: DNNP Engineering DNNP No: NK054-DRAW-01210-00008

Table with columns: DATE, ISSUE AS DRAFT, NOTES AND REVISIONS, J.D. BARNES SURVEYING PLANNING & MAPPING, LAND INFORMATION SPECIALISTS, DRAWN BY: K.L., CHECKED BY: S.C., REFERENCE NO: 08-25-087-00, DATE: JULY 23 2008, PLOTTED: 23 JUL 2008.

Table with columns: DATE, DESIGNED BY, DESIGN APPROVED, AUTHORIZED, SCALE, SHEET NO. Includes 'Darlington Nuclear Generation Station' and 'Darlington B - Indicative Project Site Area'.

Table with columns: DATE, REFERENCE TO DNNP PROPERTY LINE DRAWING NORTH OF CN RAIL ADDED, INITIAL ISSUE, NOTES AND REVISIONS, DOC. NO., SUB. TYPE, SK, SIZE, UNITS, OPER, SUBMITTER, SHEET.

"LIMIT OF EXCLUSION ZONE (914.0 METRES FROM THE REACTOR BUILDING)"



SCHEDULE table with columns: PART, PART OF, CONCESSION, PART OF PIN, AREA, NAME OF MOST RECENT TRANSFEREE.

SCHEDULE table with columns: PART, PART OF, CONCESSION, PART OF PIN, AREA, NAME OF MOST RECENT TRANSFEREE.

SCHEDULE table with columns: PART, PART OF, CONCESSION, PART OF PIN, AREA, NAME OF MOST RECENT TRANSFEREE.

SCHEDULE table with columns: PART, PART OF, CONCESSION, PART OF PIN, AREA, NAME OF MOST RECENT TRANSFEREE.

NOTES, LEGEND, ONTARIO POWER GENERATION logo, SURVEYOR'S CERTIFICATE, and INTEGRATION DATA sections.

NOTES AND REVISIONS table with columns: DATE, NO., DESCRIPTION.

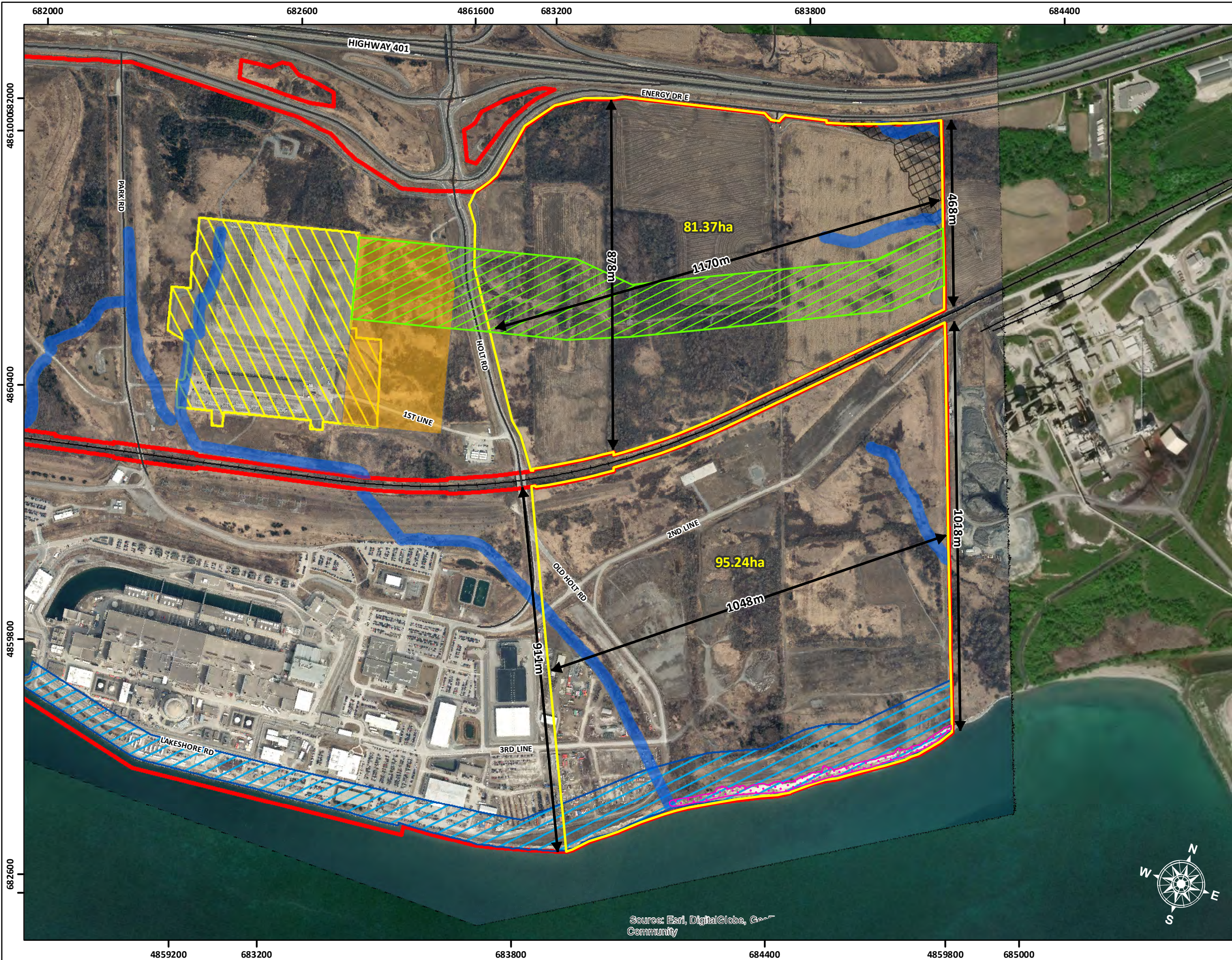
NOTES AND REVISIONS table with columns: DATE, NO., DESCRIPTION.

NOTES AND REVISIONS table with columns: DATE, NO., DESCRIPTION.

NOTES AND REVISIONS table with columns: DATE, NO., DESCRIPTION.

NOTES AND REVISIONS table with columns: DATE, NO., DESCRIPTION.

NOTES AND REVISIONS table with columns: DATE, NO., DESCRIPTION.



DISCLAIMER:
 © Ontario Power Generation Inc. 2019. This map has been produced and distributed for Ontario Power Generation Inc. purposes only. No part of this map may be reproduced, published, converted, or stored in any data retrieval system, or transmitted in any form or by any means (electronic, mechanical, photocopying, recording, or otherwise) without the prior written permission of OPG. The information on this map may not be accurate or up to date. OPG makes no representations or warranties, either express or implied, regarding this map. Any third party relies on the information in this map at its own risk and neither OPG nor any agent acting on OPG's behalf assumes any liability with respect to the use by a third party of this map. This map may contain data and other information sourced from Ontario Ministry of Natural Resources & Forestry and ESRI. This information is greatly acknowledged.

- Legend**
- OPG Ownership
 - HONI Switchyard
 - HONI Easement
 - DNNP Lands
 - Proposed DNNP Switchyard
 - Bank Swallow Colony Area
 - CLOCA Watercourse 15m Regulated Area
 - CLOCA Hazard Regulation Area
 - CLOCA Shoreline Regulation Area
 - Roads
 - Railway

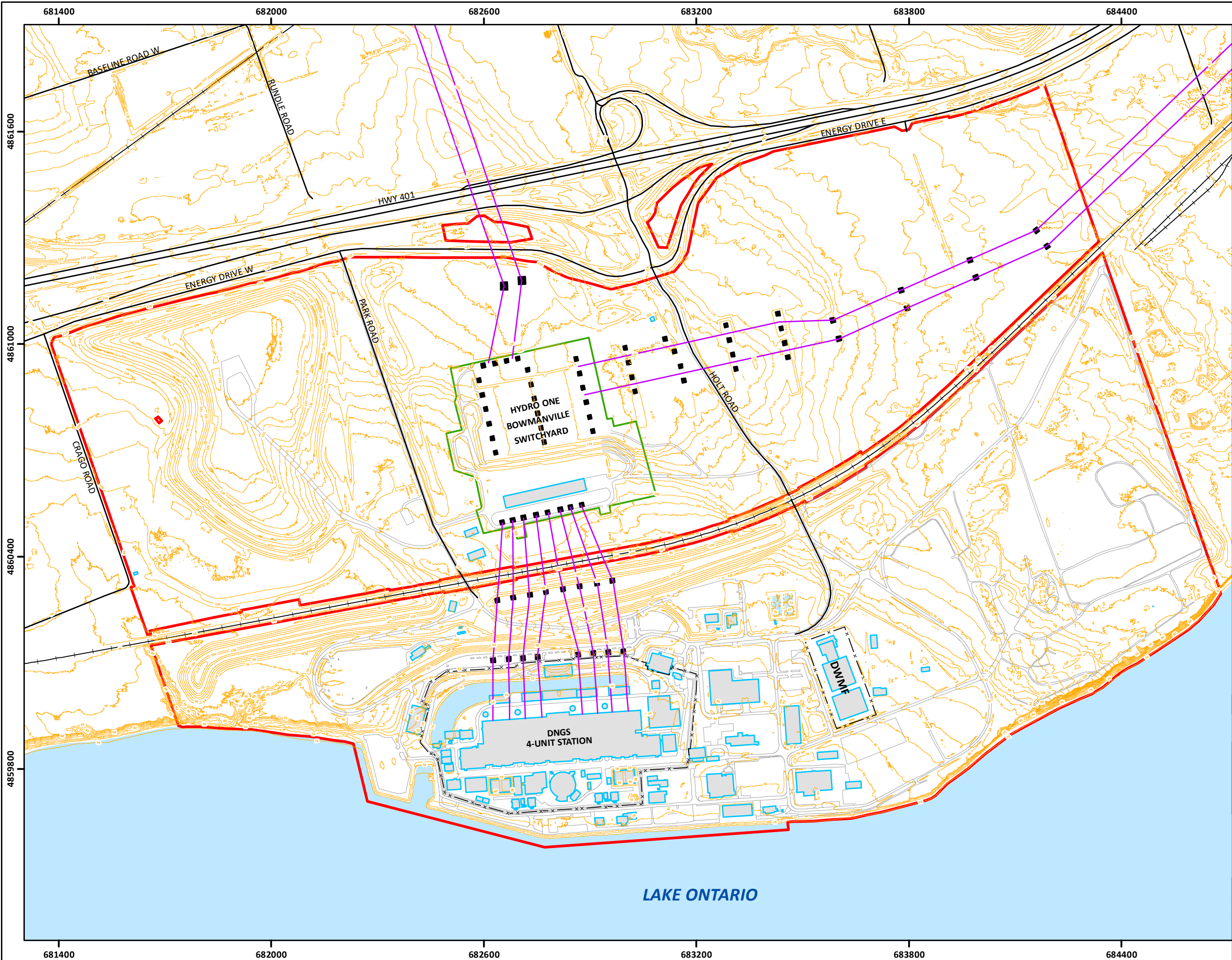


DNNP SITE

ONTARIO POWER GENERATION Real Estate Services

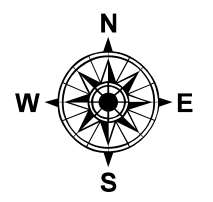
date - yr/month/day	requested by	coordinate system
2019/01/24	C. DEIR	NAD 1983 CSRS
scale	client group	zone
1:8,800	NEWNUCDEV	UTM 17N
units	designed by	datum
Meters	N. BRYAN	NA 1983 CSRS
electronic filename	sheet	version
DarlingtonNNP_Site_Rev01_2019-01-24.pdf	1 of 1	01

Source: Esri, DigitalGlobe, GeoEye, Community



DISCLAIMER:
 © Ontario Power Generation Inc. 2019. This map has been produced and distributed for Ontario Power Generation Inc. purposes only. No part of this map may be reproduced, published, converted, or stored in any data retrieval system, or transmitted in any form or by any means (electronic, mechanical, photocopying, recording, or otherwise) without the prior written permission of OPG. The information on this map may not be accurate or up to date. OPG makes no representations or warranties, either express or implied, regarding this map. Any third party relies on the information in this map at its own risk and neither OPG nor any agent acting on OPG's behalf assumes any liability with respect to the use by a third party of this map. This map may contain data and other information sourced from Ontario Ministry of Natural Resources & Forestry and ESRI. This information is greatly acknowledged.

- Legend**
- OPG Ownership
 - Hydro One Switchyard
 - Building Footprint
 - Contour Line - 2m Interval*
 - Protected Area Fence
 - Utility Power Lines
 - Tower
 - Waterbody
 - Infrastructure
 - Road
 - Railway



*Contour Lines generated from a Digital Terrain Model (DTM). LIDAR data collected October 2016 with a point density of 8 points per sq m. Contains information licensed under Open Government Licence - Ontario. See: <https://www.ontario.ca/page/open-government-licence-ontario>



01	12Dec2019	Topographic redrawn based upon 2016 data	NB	CB	DC
00	10Sept2009	See R00 for Original Signatures			
rev no	date	particulars	drawn	checked	approved
			Drafting	Verified	Engineering

**OPG NEW NUCLEAR
 AT DARLINGTON
 EXISTING TOPOGRAPHIC DRAWING
 FOR ILLUSTRATION PURPOSES**



date	2019/12/12	requested by	D. COTE	coordinate system	NAD 1983 CSRS
scale	1:10,000	client group	NEWNUCDEV	zone	UTM 17N
units	Meters	designed by	N. BRYAN	horizontal / vertical datum	NA 1983 CSRS / CGVD28
drawing number	NK054-DRAW-01210-00003	sheet	1 of 1	revision	01