



CMD 25-H12.45A

Date: 2025-01-16

Supplementary Information

Presentation from the Ya'thi Néné Lands and Resources Office

In the matter of

NexGen Energy Ltd.

License application to prepare a site for
and construct its Rook I uranium mine and
mill project

Commission Public Hearing Part 2

February 2026

Renseignements supplémentaires

Présentation du Bureau des terres et des ressources de Ya'thi Néné

À l'égard de

NexGen Energy Ltd.

Demande de permis concernant la
préparation de l'emplacement et la
construction de son projet de mine et
d'usine de concentration d'uranium Rook I

Audience publique de la Commission Partie 2

Février 2026

Response to:

**NexGen Rook I Project: Request to prepare
a site for and construct a uranium mine and
mill**

Presented by:

Ya'thi Néné Lands and Resources

February 10, 2026



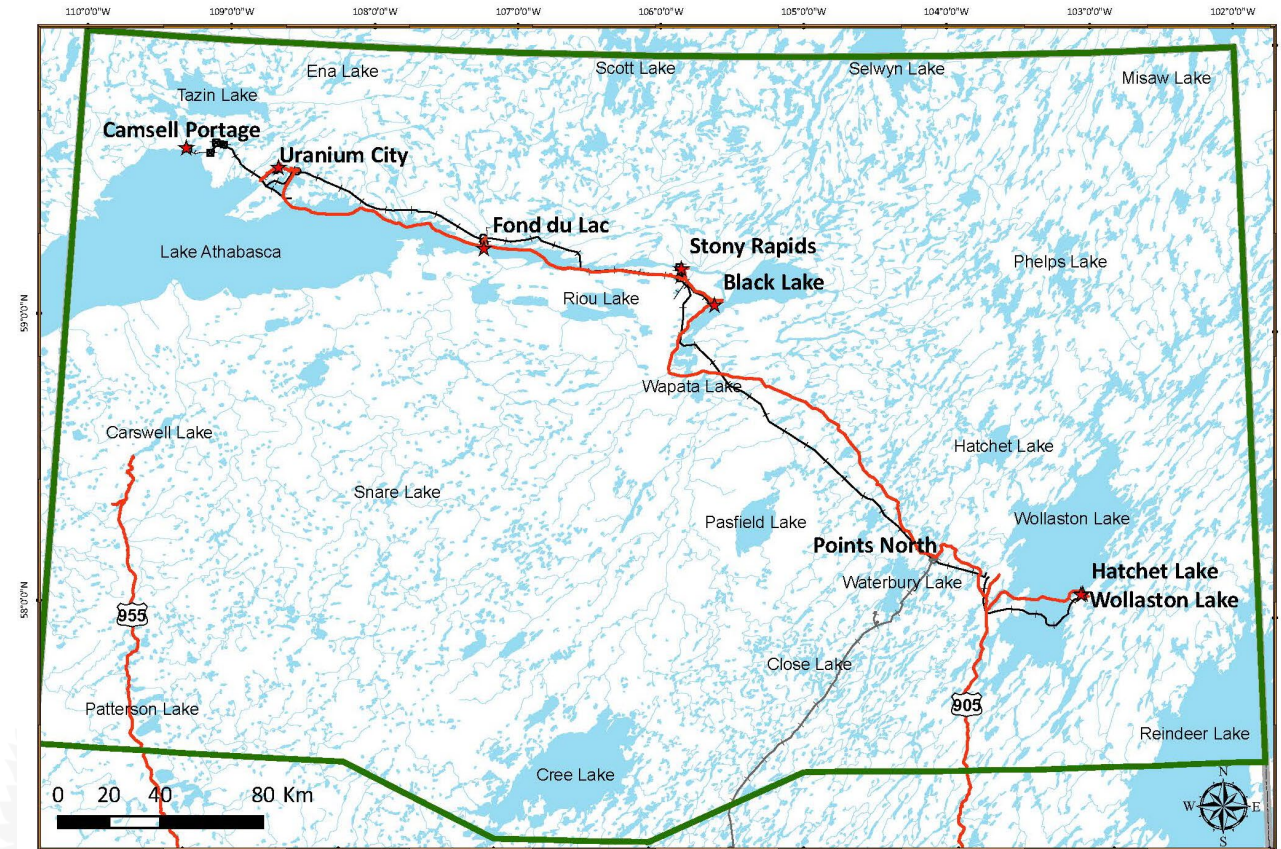


Ya'thi Néné Lands and Resources (YNLR)

Mission:

To protect the lands and waters of the Athabasca Basin for the long-term benefit of its Denesuline First Nations and Athabasca communities

Nuhenéné (Traditional Territory)





Athabasca Denesų́tiné & Basin Communities

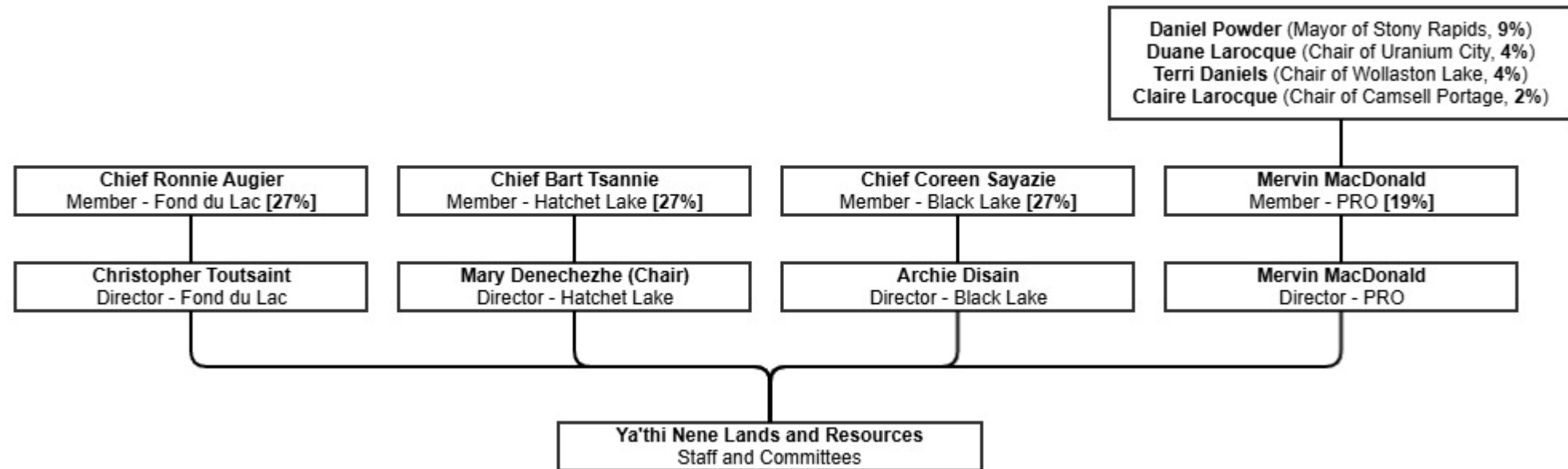
YNLR is owned by the **7 Athabasca communities**:

- Black Lake First Nation
- Fond du Lac First Nation
- Hatchet Lake First Nation
- Stony Rapids
- Wollaston Lake Post
- Uranium City
- Camsell Portage

Communities are united to protect Nuhenéné and ensure responsible development

Governance

Our Leaders mandate YNLR to safeguard Nuhenéné and advocate for Basin residents



YNLR Staff and Offices: Uranium City, Fond du Lac, Black Lake, Hatchet Lake, Saskatoon



Garrett Schmidt – Executive Director
Dana Kellett – Manager of Environment
Katherine Hay – Manager of Corporate Affairs
Bruce Hanbidge – Strategic Advisor
Megan Wallace – Environmental Land Use Planner
Steven Foti – Project Manager
Celeste Robillard – Administrative Coordinator
Ashley Robillard – Admin/Comms Assistant
Keesha Martin – ENSA Coordinator
Tina Giroux – Contract ENSA Project Manager
Linda McNabb – Contract Human Resources
May-Britt Jensen – Contract Workforce Development
Fond du Lac – Jason Adam, Morgan Lidguerre
Black Lake/Stony Rapids - Vacant
Hatchet Lake/Wollaston –Jean Tsannie, Thomas Besskkaystare, Curtis Tsannie
Uranium City - Margaret Powder, Wayne Powder



Ya'thi Néné's Role

- Prior to YNLR, Athabasca communities were largely uninformed about exploration and mining projects and received little benefits
- Damage to the lands and waters occurred
- Now, YNLR liaises between communities, industry, and government on projects of mutual interest and has formal agreements with multiple exploration and mining companies
- To strengthen the relationship and support the discussion of issues or concerns, YNLR and CNSC established a Terms of Reference in 2022



Relationship with Industry

- YNLR has relationships with numerous resource companies operating in the Athabasca Basin
- Partnerships are based on respect, transparency, and shared commitment to stewardship and collaboration



How We Protect Nuhenéné

- Consultation and engagement
- Environmental reviews
- Environmental monitoring
- Policy and technical analysis



Current and Forthcoming Work

- Site inspections by Community Land Technicians (CLTs)
- Environmental monitoring and Traditional Knowledge gathering
- Woodland caribou/cumulative effects monitoring
- Etthén Néné Stewardship Areas (long-term land protection initiative)



Etthén Nene Stewardship Areas (ENSA)

Community-driven land stewardship

Finding balance:

- Optimizing sustainable development
 - Economic opportunities
 - Strengthening partnerships
- Beneficial protection
 - Cultural resilience
 - Wildlife and environment

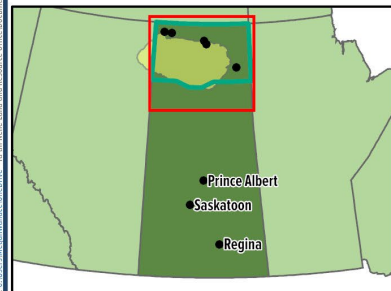




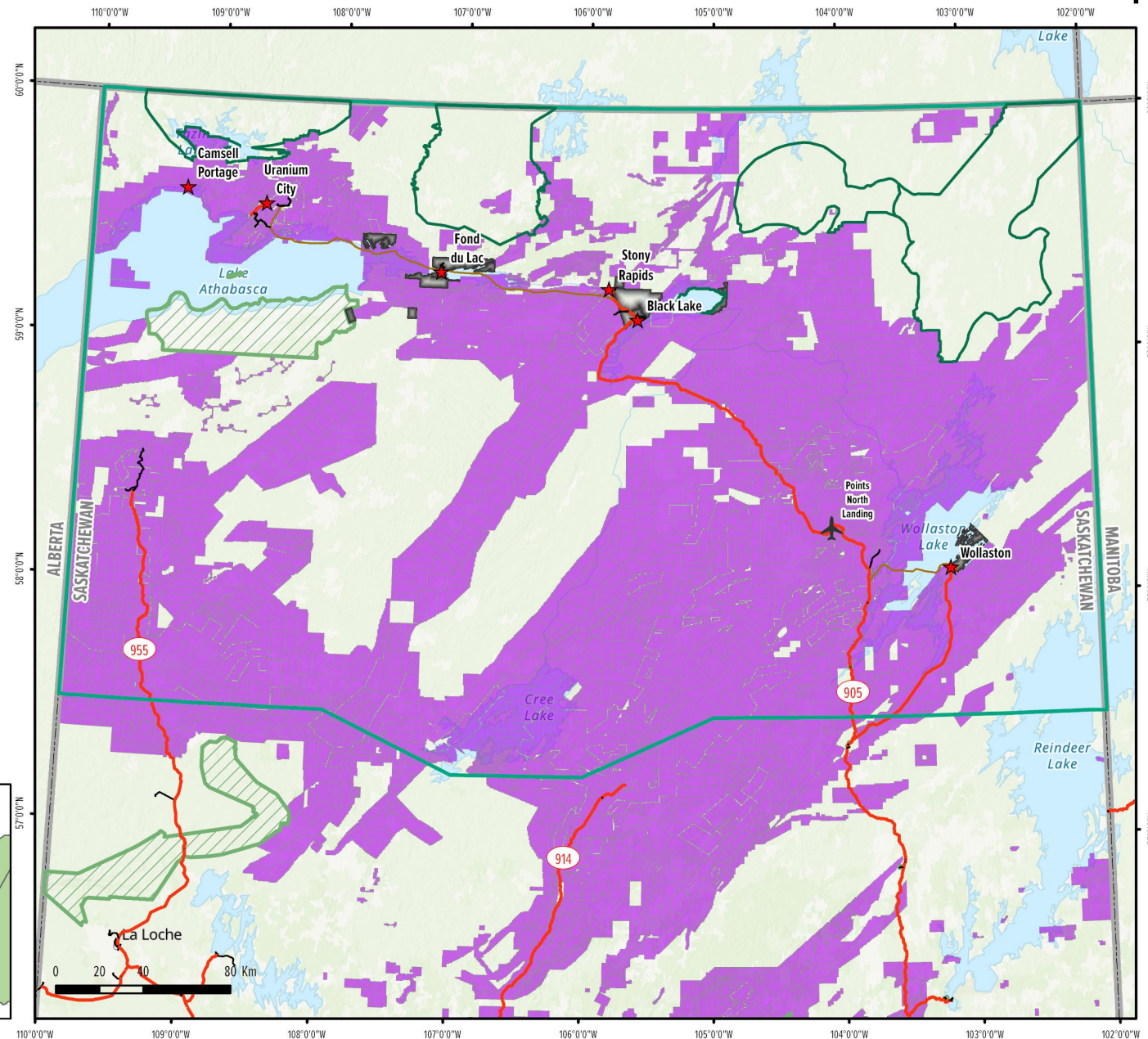
- Etthén Néné Stewardship Area
- Nuhenéné
- Athabasca Communities
- Points North
- Highways
- Winter Roads
- Other Roads
- All Parks as Legislated
- Athabasca Reserves
- Mineral Dispositions
- Provincial Boundary

Map Scale:
1:2,500,000

BASEMAP INFORMATION SOURCES:
Canvec
Government of Saskatchewan
Natural Resources Canada (NRCCAN).



Industry and ENSA



This information was created solely for a specific purpose within the Athabasca Denesuline First Nations. Any use must be approved by Yá'Thi Néné Lands and Resources Office. NAD 1983 UTM Zone 13N. October, 2025



YNLR's Involvement in IEMP



YNLR appreciates our involvement with the CNSC Independent Environmental Monitoring Program (IEMP) each year

- Conduct interviews to help determine sampling locations and traditional foods to include in sampling
- Staff participate in field work
- Residents can donate food they want tested
- Great example of how remote Indigenous communities can work directly with regulators



Overview of our Intervention

- Indigenous Engagement
- Cumulative Effects
- Water Quality & Fish Health
- Wildlife (Caribou)
- Environmental Monitoring & Indigenous Involvement

Understanding the Rook I Project

- Underground uranium mine and mill
- Within Treaty 8 Territory
- Average of 1300 tonnes of ore per day
- 24-year operation (not including construction and closure stages)



YNLR's Engagement with NexGen



- Multi-year review of the EIS
- Engagement Agreement in 2023
- Joint working group (JWG) meetings between YNLR and NexGen
- Review and comment on draft plans
- Collaborative progress

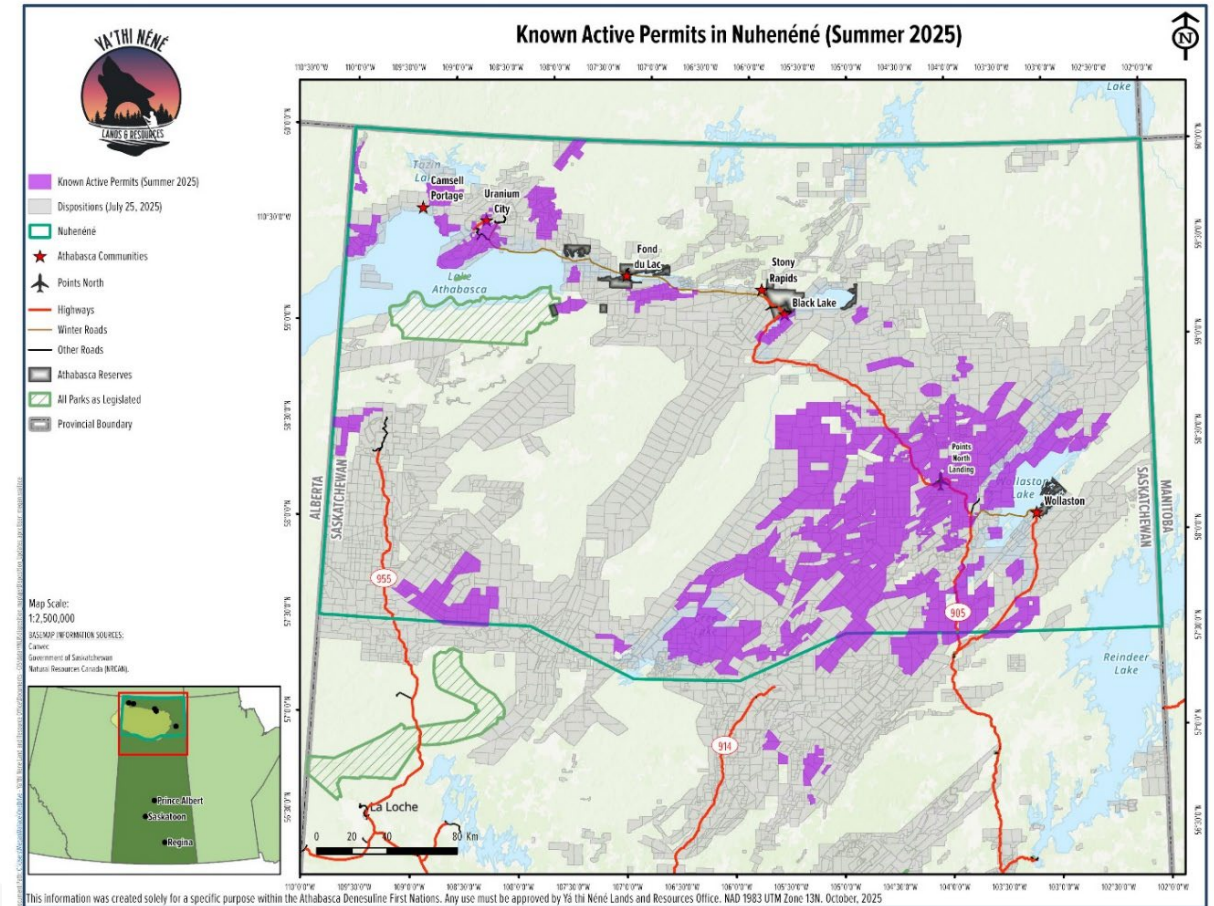
Respectful and Meaningful Engagement

- Engagement must be ongoing, timely, and transparent
- Indigenous knowledge must be central



Cumulative Effects: Our Biggest Concern

- Nuhenéné is facing a minimum of 20,400 km of linear disturbance
- Rapid growth of mineral claims
- Cumulative effects reduce the ability to practice traditional land use and exercise and uphold Treaty Rights



Woodland Caribou

- Provincial Ministerial Decision requires a caribou plan and offsets
- Need ongoing Indigenous review and input on these plans
- Habitat fragmentation is a critical concern



Water Quality and Fish Health

- Other proponents nearby proposing more uranium mines
- Communities depend on clean water for drinking, fishing, tourism, travel
- Past mistakes and experience (including Beaverlodge) heighten concern



Lessons from Beaverlodge

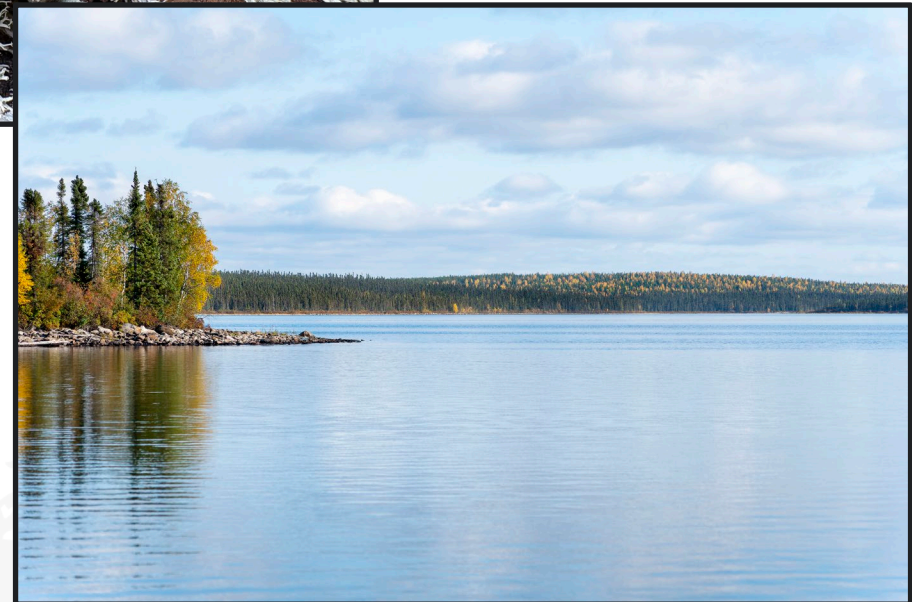
- Legacy contamination remains
- ICP transfer was opposed by all seven Basin communities
- Importance of early planning, financial assurance, and long-term monitoring



Environmental Monitoring Needs



- Monitoring must include:
- Water quality
- Wildlife movement
- Fish health
- Indigenous access to summarized and/or raw field data in real time



Indigenous Involvement in Monitoring



- Indigenous-led, co-designed monitoring program
- Data sharing agreements
- Employment & training opportunities
- Community confidence

Closure and Reclamation Planning

- Must start now, not at end of mine life
- Strong financial assurance
- Clear long-term responsibilities





Key Recommendations

- Early review of all monitoring plans
- Indigenous-led environmental monitoring
- Cumulative effects considered holistically
- Strong closure and reclamation planning
- Transparent data sharing
- Ongoing, meaningful engagement

The Importance of Protecting Nuhenéné

- Our homeland must be protected for future generations
- We support development that aligns with respect, transparency, safety, inclusion and sustainability



Path Forward with NexGen and CNSC



- Commitment to continued engagement and strengthening of Basin community inclusion
- Community-driven monitoring
- Building a shared vision for responsible development

Marsi cho!



YA'THI NÉNÉ LANDS AND RESOURCES
100 – 335 PACKHAM AVENUE
SASKATOON, SK S7N 4S1

T: 306-477-1251
F: 306-802-4800
E: ADMIN@YATHINENE.COM

YATHINENE.CA