



## **Supplementary Information**

### **Presentation from the Ya'thi Nene Land and Resource Office**

In the Matter of the

#### **Orano Canada Inc., Cluff Lake Project**

---

Request to Revoke the Current Licence and Release the Cluff Lake Project to the Institutional Control Program

#### **Commission Public Hearing**

**March 1, 2023**

## **Renseignements supplémentaires**

### **Présentation du Bureau des terres et des ressources de Yà'thi Néné**

À l'égard de

#### **Orano Canada Inc., Projet de Cluff Lake**

---

Demande visant à révoquer le permis pour le projet de Cluff Lake et à transférer la propriété au Programme de contrôle institutionnel

#### **Audience publique de la Commission**

**1<sup>er</sup> mars 2023**

# Ya'thi Néné Lands and Resources

Presentation to Canadian Nuclear Safety  
Commission

Orano's Cluff Lake Property

1 March 2023



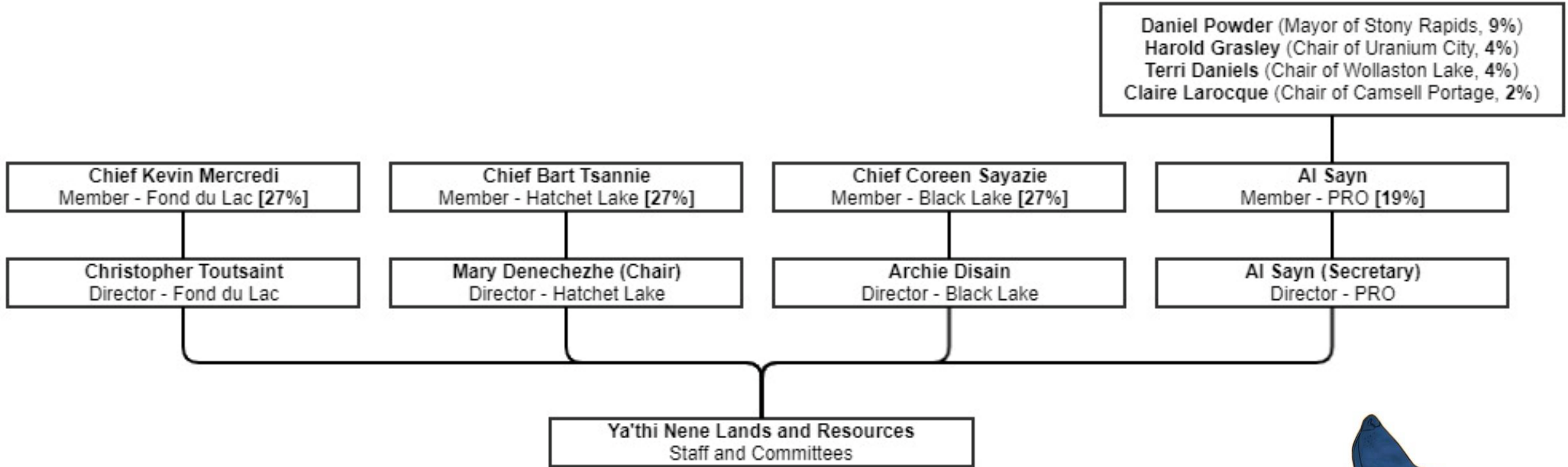


# Ya'thi Néné Lands and Resources

*Mission:*

*To protect the lands and waters of the Athabasca Basin for the long-term benefit of its Denesúliné First Nations and Athabasca communities*

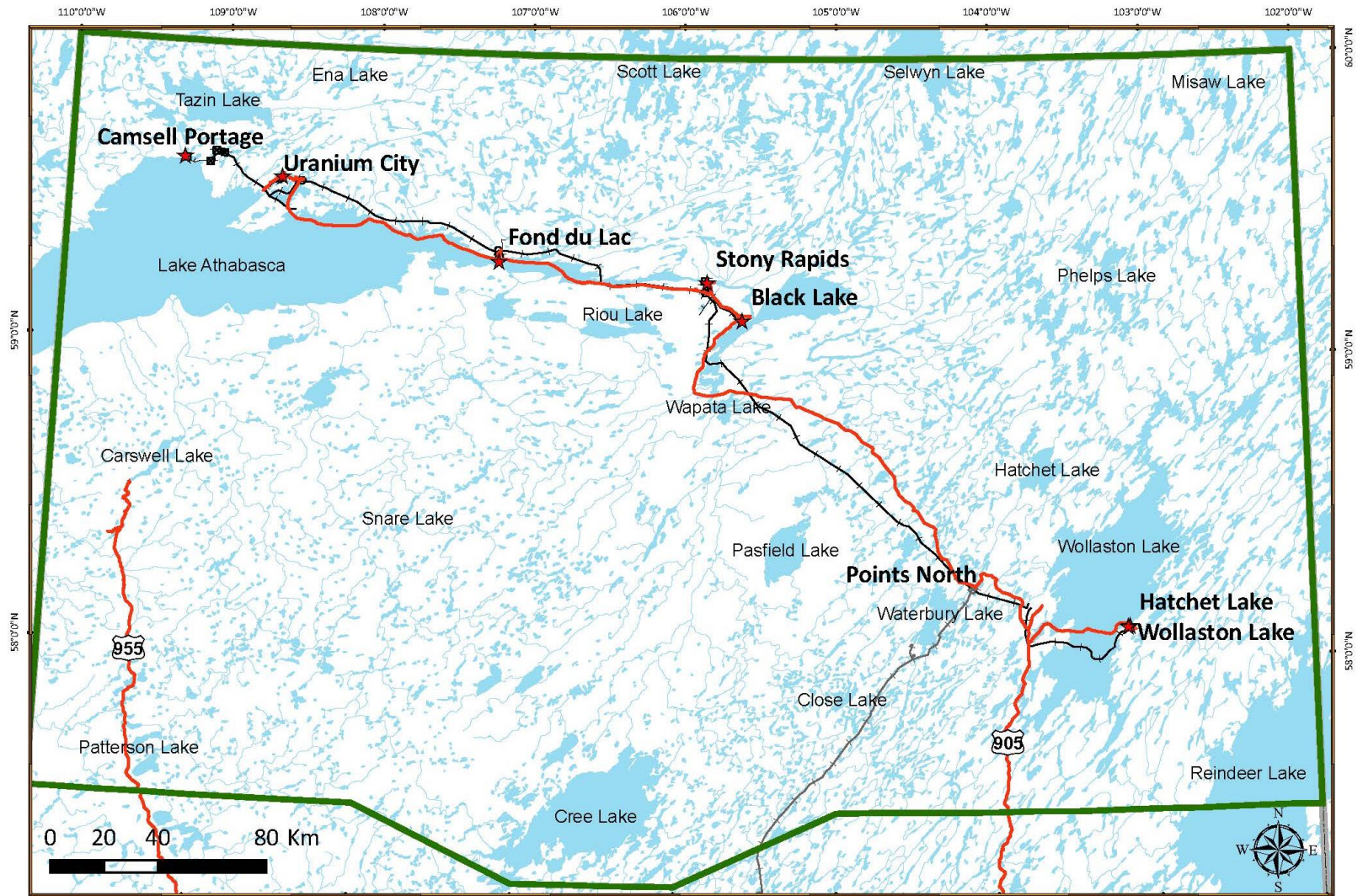
# Governance



**Ya'thi Néné Lands and Resources is Indigenous-owned and Community-led**



# Nuhenéné (Traditional Territory)





## Ya'thi Néné Lands and Resources: 5 Offices

Garrett Schmidt – Executive Director

Bruce Hanbidge – Operations Manager

Dene Robillard – Development Coordinator

Dana Kellett – Environmental Advisor

Megan Wallace – Environmental Land Use Planner

Celeste Robillard – Admin/Communications

Vickie Nilghe – Bookkeeper

Tina Giroux – Contract Project Manager

Linda McNabb – Contract Human Resources



### *Community Land Technicians:*

Derek Cook, Chris Isodore, Marc Robillard, Angela Fern – Fond du Lac

Ian Donard, Bradley Laban, Alfred Toutsaint – Black Lake / Stony Rapids

Jean Tsannie, Curtis Tsannie – Hatchet Lake / Wollaston Lake Post

Margaret Powder – Uranium City

Dennis Larocque – Camsell Portage

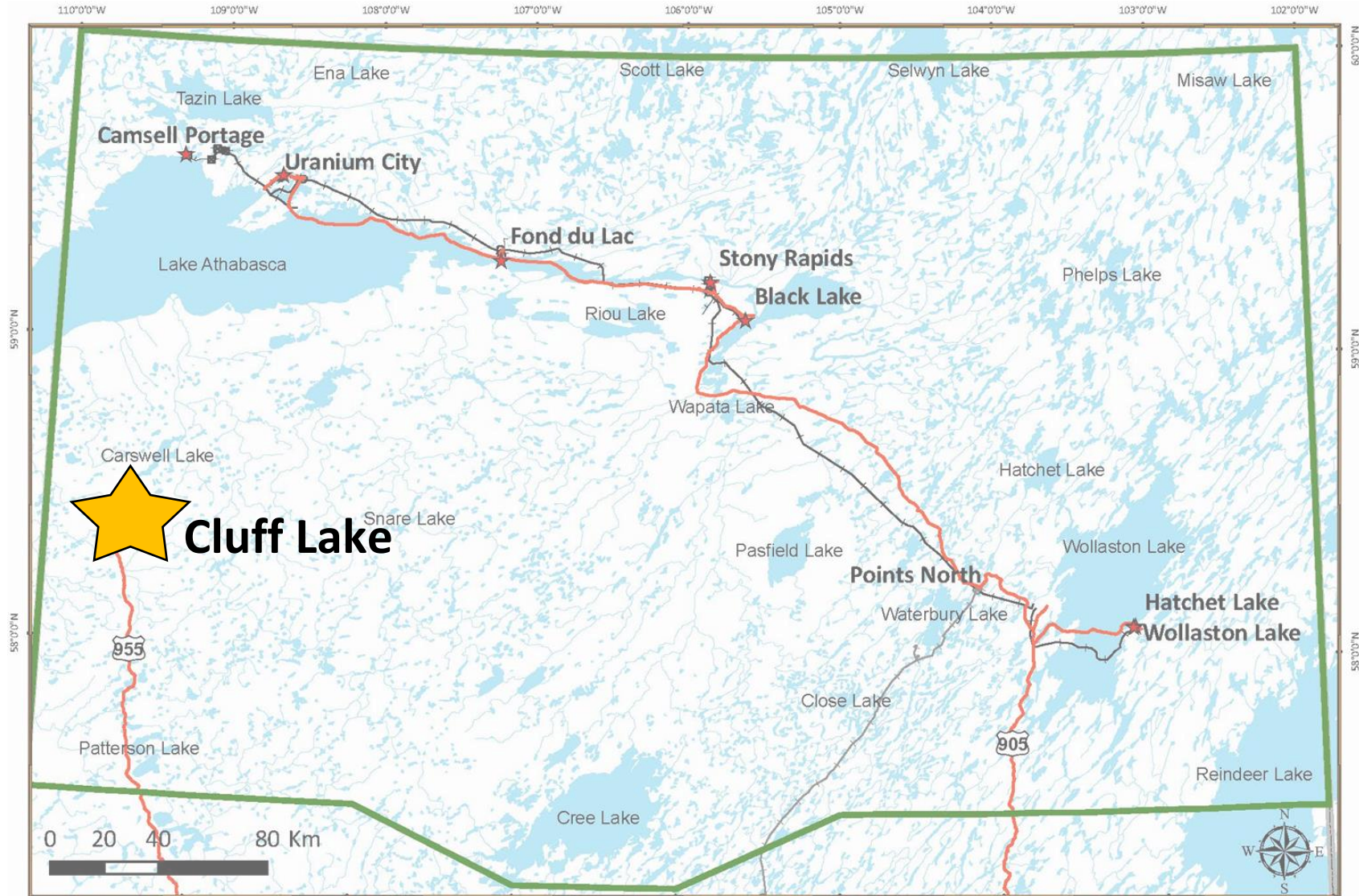
# Ya'thi Néné's Role

---

- Prior to YNLR, Athabasca communities were largely uninformed about exploration and mining projects and benefitted little from these endeavours
- Damage to lands and waters occurred
- Now, YNLR liaises between communities and industry and government on projects of mutual interest
- To strengthen the relationship and support the discussion of issues or concerns, YNLR and CNSC established a Terms of Reference in July 2022



# Cluff Lake is within Nuhenéné





# Interviews with Nuhenéné Residents

---

- Knowledge of decommissioning details?
- Land use around Cluff Lake?



# Interviews with Nuhenéné Residents


Confidence in remediation and monitoring?

Community involvement in future monitoring?

Concern about contaminants?



Source: CNSC CMD for Orano's Cluff Lake Project



# YNLR Concerns and Recommendations

- **Concern:** adequate monitoring and management by Saskatchewan's Institutional Control Program?
  - Funding?
  - Communication?
  - Involvement of Indigenous communities in monitoring?
- **Recommendations:**
  - Development of a communications plan
  - Development of a monitoring program



# YNLR Concerns and Recommendations

- **Concern:** Cumulative effects in Nuhenéné are not quantified, understood, or addressed
- **Recommendation:**
- CNSC and YNLR collaborate on a cumulative effects assessment for Nuhenéné

# Closing Remarks

YNLR acknowledges initiatives by CNSC that contribute to relationship-building and engagement with Basin communities

Terms of Reference

Commission visit to Hatchet Lake

YNLR staff involvement in IEMPs

YNLR welcomes further collaboration with CNSC

## Contact:

[www.yathinene.ca](http://www.yathinene.ca)

[admin@yathinene.com](mailto:admin@yathinene.com)

