



**Supplementary Information  
Oral Presentation**

**Renseignements supplémentaires  
Exposé oral**

**Presentation from  
Jennifer Logan**

**Présentation de  
Jennifer Logan**

In the Matter of the

À l'égard de

**BWXT Nuclear Energy Canada Inc.,  
Toronto and Peterborough Facilities**

**BWXT Nuclear Energy Canada Inc.,  
installations de Toronto et Peterborough**

---

Application for the renewal of the licence for  
Toronto and Peterborough facilities

---

Demande de renouvellement du permis pour les  
installations de Toronto et Peterborough

**Commission Public Hearing**

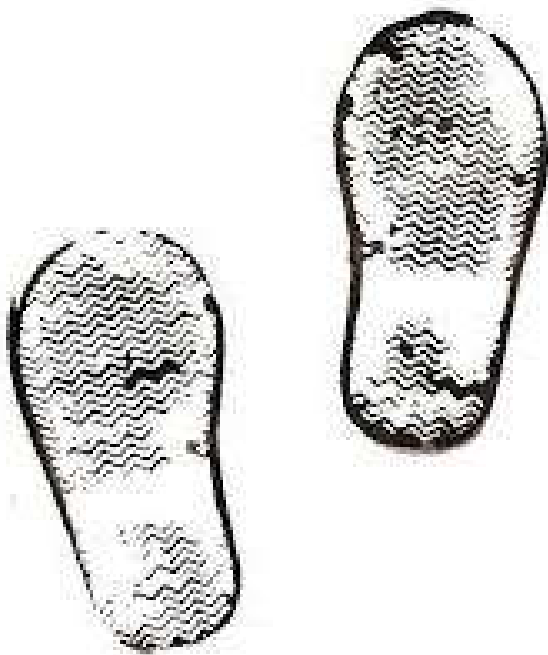
**Audience publique de la Commission**

**March 2 to 6, 2020**

**Du 2 au 6 mars 2020**

*This page was intentionally  
left blank*

*Cette page a été intentionnellement  
laissée en blanc*

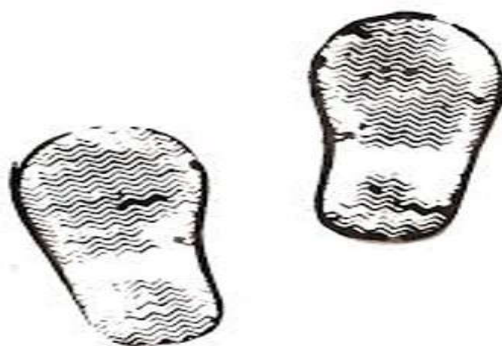


# 36 steps: Oral Submission BWXT Licensing Application.

March 5, 2020

Jennifer Logan

# 36 Steps



## Concerns:

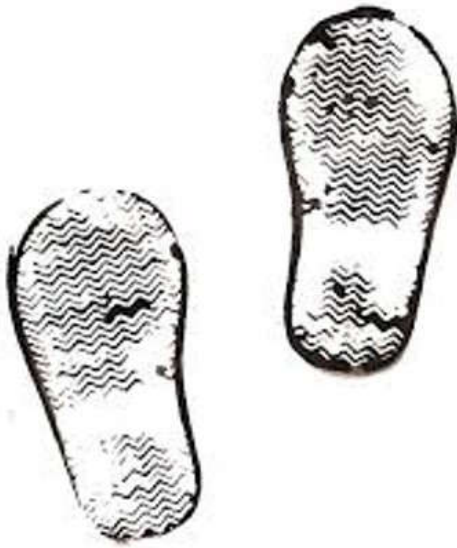
1. Scope of the license: 1 license—2 sites (Toronto and Peterborough)
2. Proximity to POW school.
3. Community awareness and involvement in the safety implications and safety plan.
4. Liability and Accountability



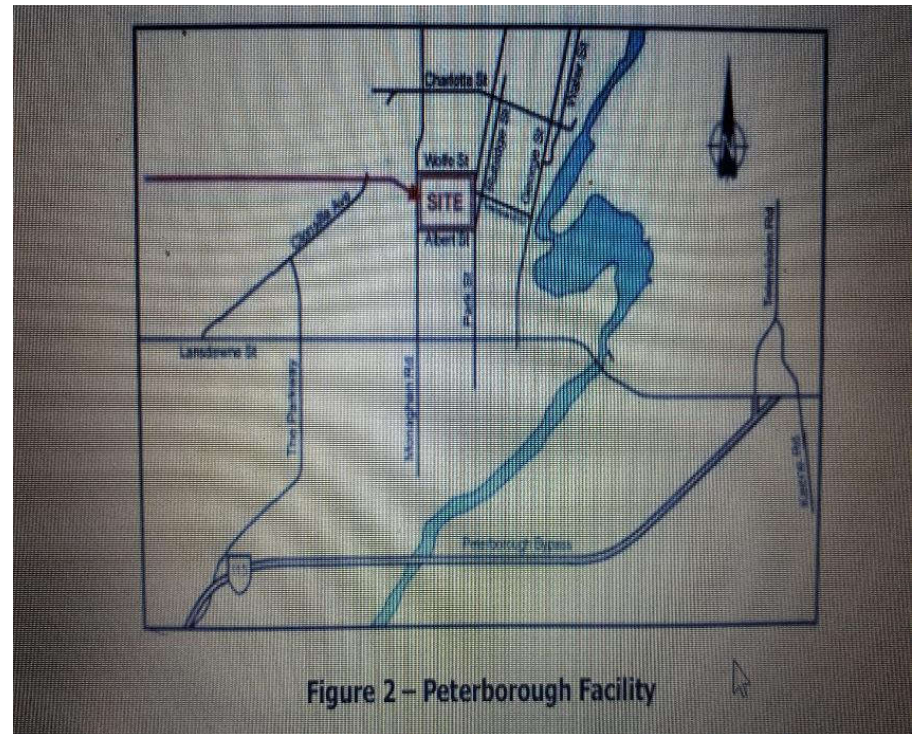
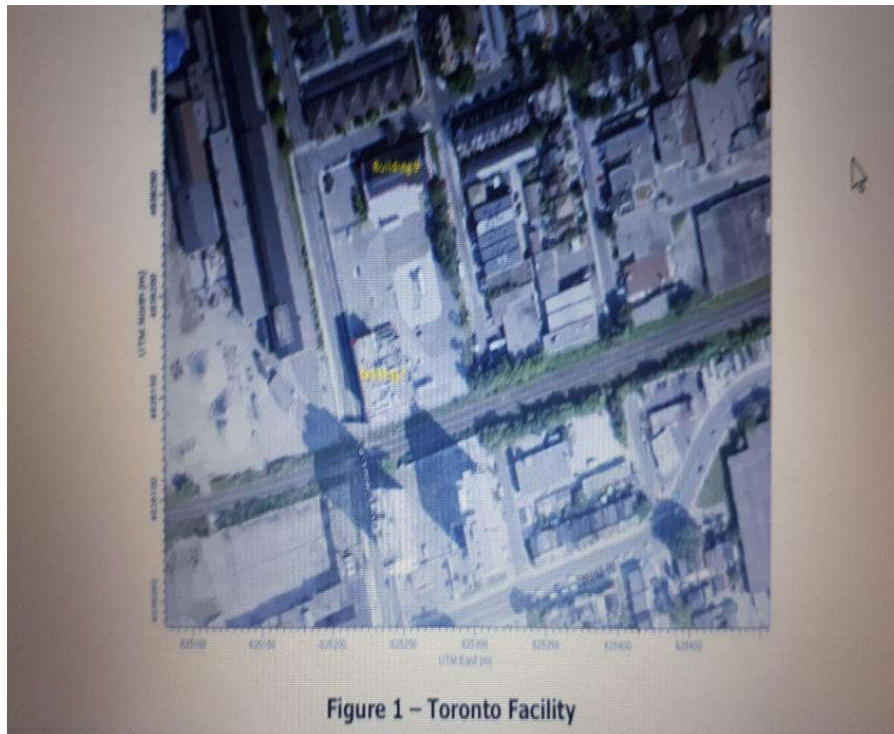
One License—  
Two sites.

Why?

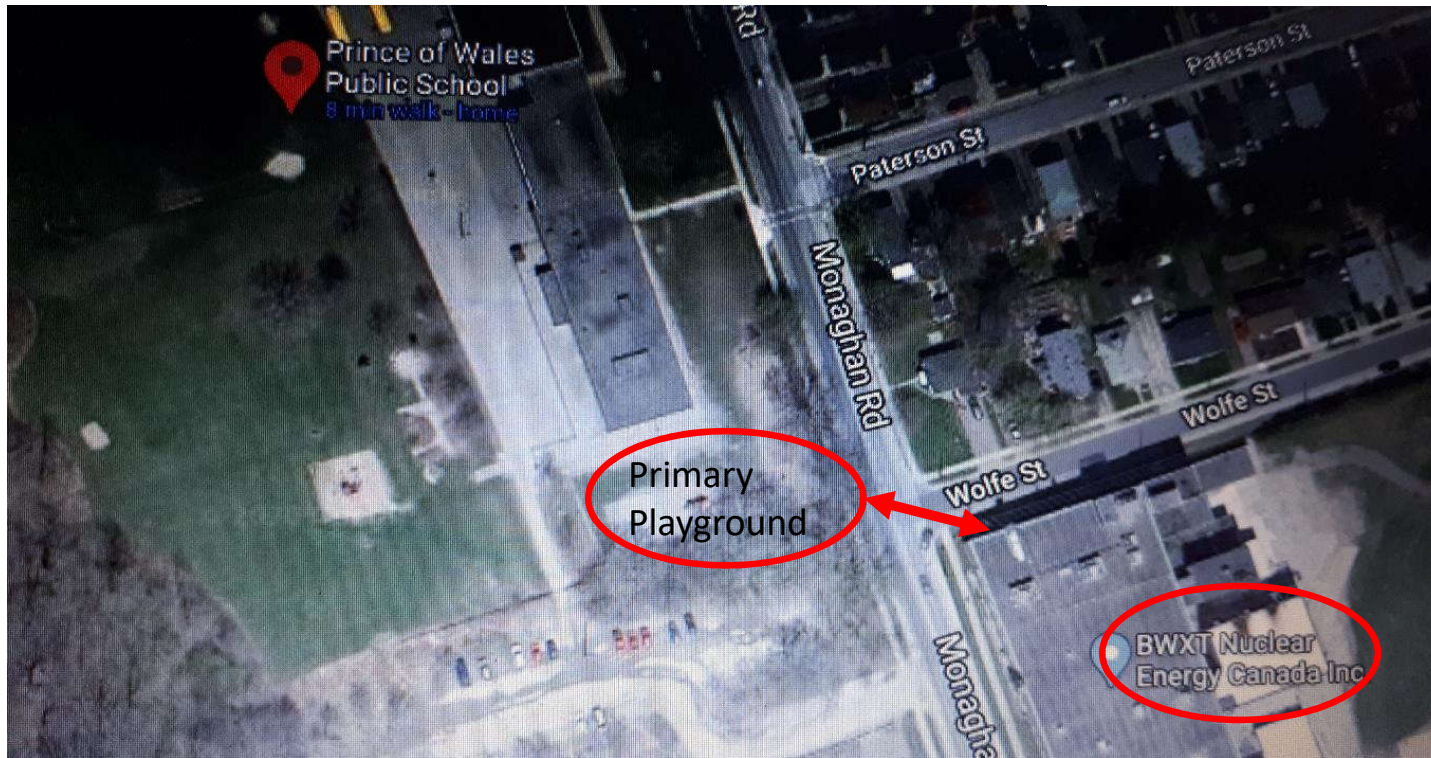
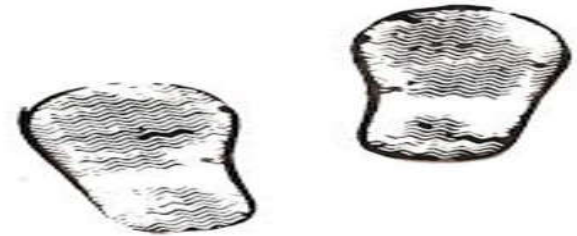
\$



# 1.1 One Licence: Two Sites

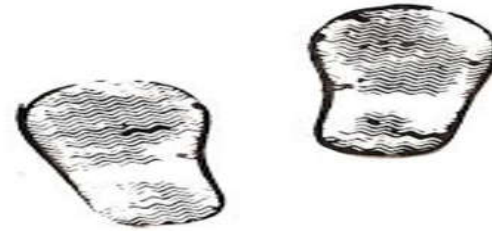


# 36 Steps



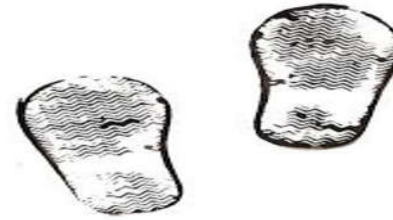


36 Steps



*Figure 4. Prince of Wales elementary school playground with BWXT plant and stack in background. Photo by Robert Del Tredici, December 3, 2019.*

36 Steps



# “Safety Culture”

## Hazardous materials at BWXT

- Radioactive materials—  
**UO<sub>2</sub> pellets and powder**
- **Beryllium**
- **Compressed Gas Cylinders**
- Fire
- Hydrochloric Acid
- Isopropyl Alcohol
- High Pressure Water



# A “WHAT-IF” Safety Analysis...

A What-If  
Safety  
Analysis

“Brainstorming sessions  
to determine  
**what could go wrong** in  
a given operation.”

BWXT Safety Analysis Report page 3.



4

**Be**

**Beryllium**

**9.01218**

| A “What If”

# Liability and Accountability

Who is liable should things go wrong....BWXT or GE or CNSC?





# We Remember

## FATAL LEGACY

PART 1 OF A STAR INVESTIGATION

#CBC  
DOCS  
BOV

### Ailing retirees of GE plant say they're paying price for toxic past

Generations of workers in Peterborough had seen factory as a symbol of opportunity

SARA MOJTEHEDZADEH  
WORK AND WEALTH REPORTER

PETERBOROUGH—Despite working at the plant since he was 16, Ed Condon carried himself with a gentleness factory life didn't afford him — never swearing, smoking or drinking.

Retirement, his family hoped, would finally heal the bone-deep cracks in his hands, stop the nosebleeds he stubbornly brushed off. There would be more twilight drives down River Rd. with his wife, more rambles in the woods with his three grandchildren.

But Ed Condon always believed the

chemicals would kill him first.

In the end, his family says, he was right. Where he once dreamed of more woodland walks, a simple cross now commemorates him.

"He had such amazing integrity and honour. And he was such an honest man," says his daughter Cindy Crossley, who lost her father to an inoperable brain tumour in 2012.

"He was my everything."

Families like the Crossleys say a silent tragedy has ravaged a tight-knit community of Peterborough workers who've filed hundreds of compensation claims

## TOWN OF WIDOWS



2019  
CLIFF  
BEST IN  
FESTIVAL  
WINNER

2015  
BEATING  
HEART  
AWARD  
WINNER

2015  
BEST  
CANADIAN  
FILM  
WINNER

CLIFF 11



Courtesy of Peterborough Examiner. <sup>15</sup>

???



Recommendations:

---

Identification of the source of increasing rates of beryllium at POW school and remediation of contaminated lands.

Independent environmental monitoring.

Licensing application specific to Peterborough Site with transparent development plan.

Community members on BWXT Safety Committee.

Establishment of a Community Restitution Fund in the event of an industrial accident at the plant to be managed by BWXT and the community.



# 36 Steps



## Again the Questions...

1. Why one licence two sites when the sites are so different?  
With one licence 2 sites explain how you will ensure Peterborough's concerns are a priority?
2. Why in your licensing document did you chose different presentation styles (one a true satellite image of Toronto and the other a hand drawn sketch of Peterborough) to represent the sites?

## More Questions:

3. As part of your brainstorming “What-If” analysis you determined that things could go wrong.

- Could you elaborate?
- Could you tell us in more detail what could go wrong?
- How specifically are the students to be protected in the event something goes wrong?
- Are members of the community, school board, hospital on your safety council?

## More Questions

6. What specifically will BWXT do if carcinogenic Beryllium or Uranium levels in the soil of POW playground exceeds scientifically accepted safety levels?
7. BWXT is a tenant on a GE site that is already proven to be toxic. Who is liable—BWXT or GE or CNSC---should something go wrong now or 20 years from now?
8. What mechanisms for compensation are in place both for employees and the community should something go wrong?